



STATE OF SCHOOL

DRAFT 3

May 2022



**FANNING
HOWEY**





Table of Contents

INTRODUCTION	1
Enrollment & Demographics	3
<i>Demographics and Labor Statistics</i>	5
<i>Historic Enrollment</i>	6
<i>Enrollment Projections</i>	7
Functional Capacity	9
<i>District Capacity Summary</i>	10
<i>Facility Data - Capacity + Utilization</i>	11
<i>Facility Data - Cost per Student</i>	13
Educational Programing	15
<i>Comprehensive District Map</i>	16
Educational Adequacy	20
<i>High School Overview</i>	22
<i>Middle School Overview</i>	23
<i>Elementary School Overview</i>	24
<i>Score Summary</i>	25
Condition Assessment	27
<i>High School Overview</i>	28
<i>Middle School Overview</i>	29
<i>Elementary School Overview</i>	30
<i>Score Summary</i>	31
Support Facilities Overview	33
Detail School Overview	48
References and Source Material	75

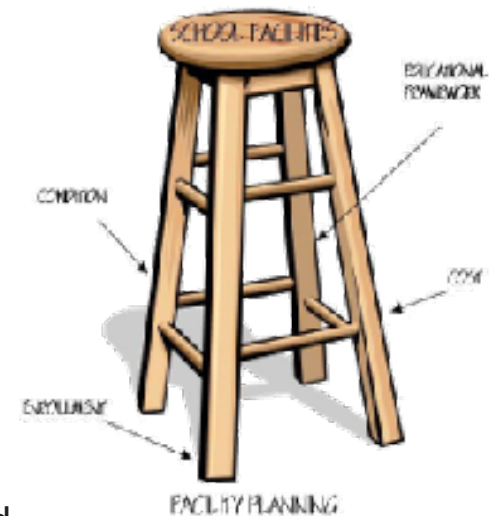
INTRODUCTION

Approach to Facilities Master Planning

Comprehensive facility planning requires an iterative process essential to maintaining the short and long-term well-being of a District's infrastructure. There is no 'boiler plate' approach to planning as every school district has a unique set of characteristics that set it apart from others. However, there are commonalities in the types of data and information that should be used to make both fact based and stakeholder-based decisions when the plan is developed.

We often use the analogy of a four-legged stool in which the seat represents the facilities, and that seat is supported by four legs of equal importance. The legs include:

- Educational Framework: Curriculum, Programs, Delivery Models, and Policy
- Demographics: Enrollment and the data that impact enrollment
- Condition: Physical Condition and Educational Adequacy
- Funding: Ability to fund and sources of funding



PURPOSE

Purpose of a Facilities Master Plan

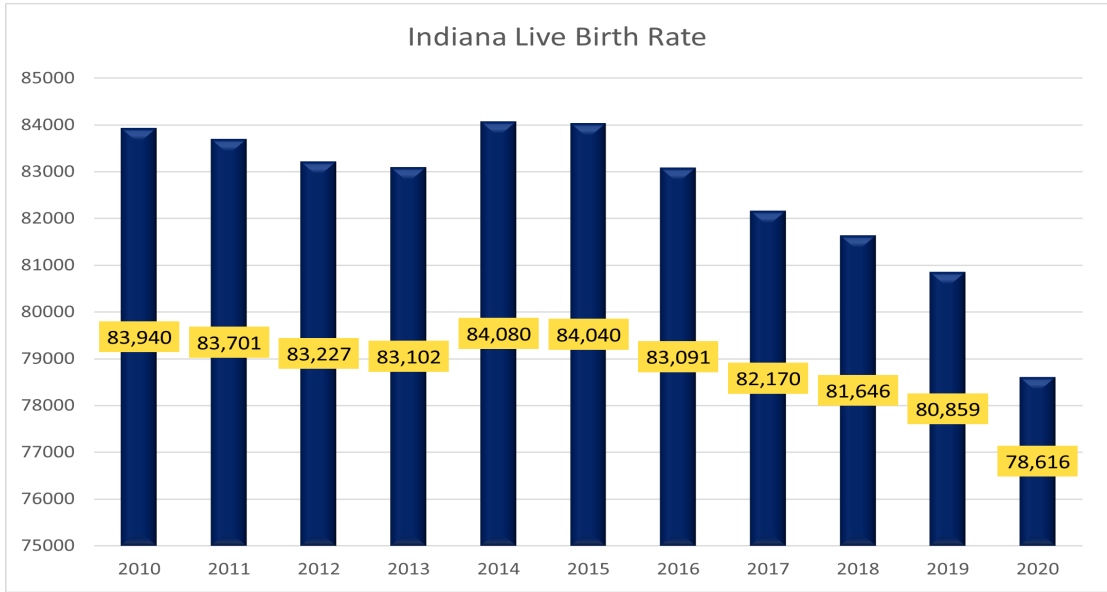
The purpose of a facilities master plan is to create a road map for both short and long-term capital and maintenance needs of a District's educational and support facilities. The master plan should account for all facilities in the District's portfolio, as all are connected in a way in which the actions to one facility will have a domino impact as to what will happen to the next. Experience tells us that it is unlikely that any school district can fund all the facilities needs identified in the plan. Therefore, a plan becomes an exercise of identifying all the needs and utilizing a prioritization approach based on the data, educational framework, stakeholder input and the unique culture of the District.

Enrollment & Demographics

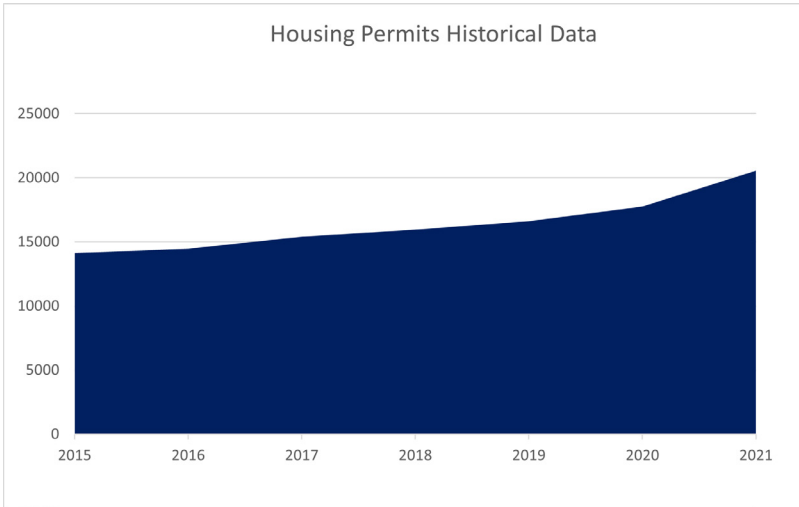


Enrollment & Demographics

Student enrollment forecasts, regardless of a district’s size, are a critical element to successful school planning. Typically, student enrollment forecasting is calculated using historical enrollments, live birth data, housing permits, and macro level social/demographic trends.

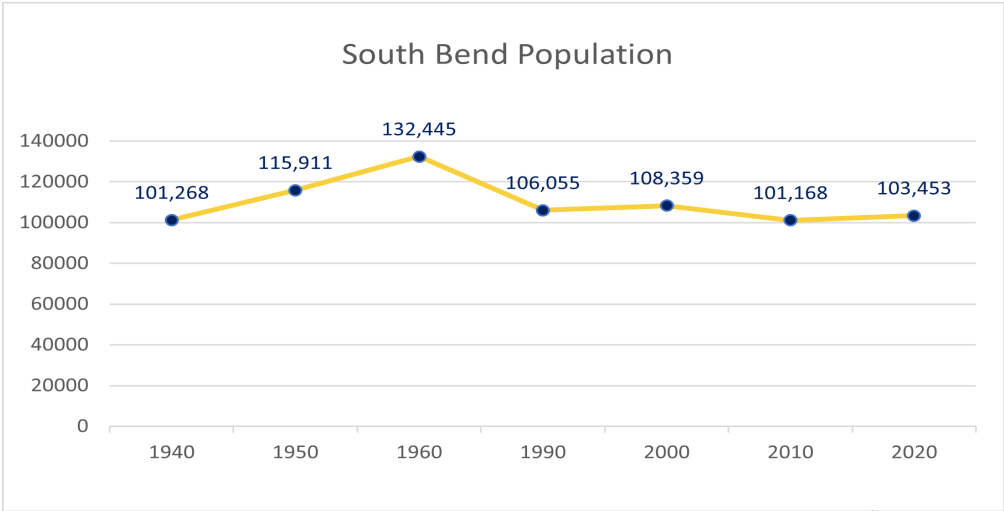


*Live birth rates are only available at the state level (March of Dimes)²



*Business and industry. (United States Census Bureau)³

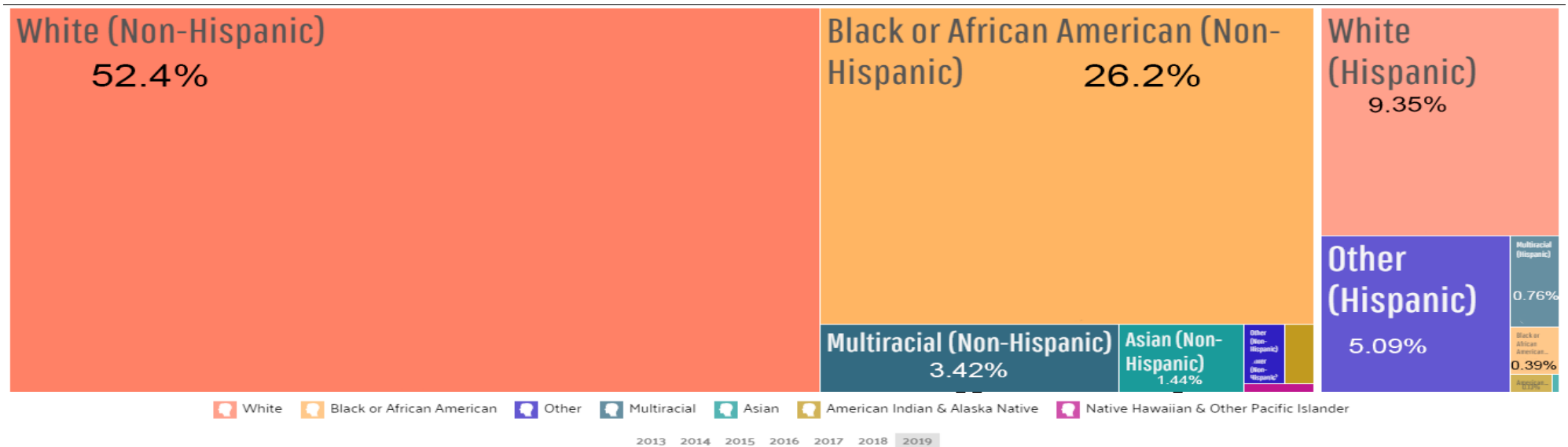
According to Census Bureau data, South Bend’s population is now 103,453 – a 2.26% increase from its 2010 count of 101,168. The population mark represents the largest individual population increase since the 1960 Census, and the first time in a century that South Bend’s population grew at a faster rate than St. Joseph County’s population as a whole. (Source – Southbendin.gov)¹



*Business and industry. (United States Census Bureau)³

Demographics and Labor Statistics

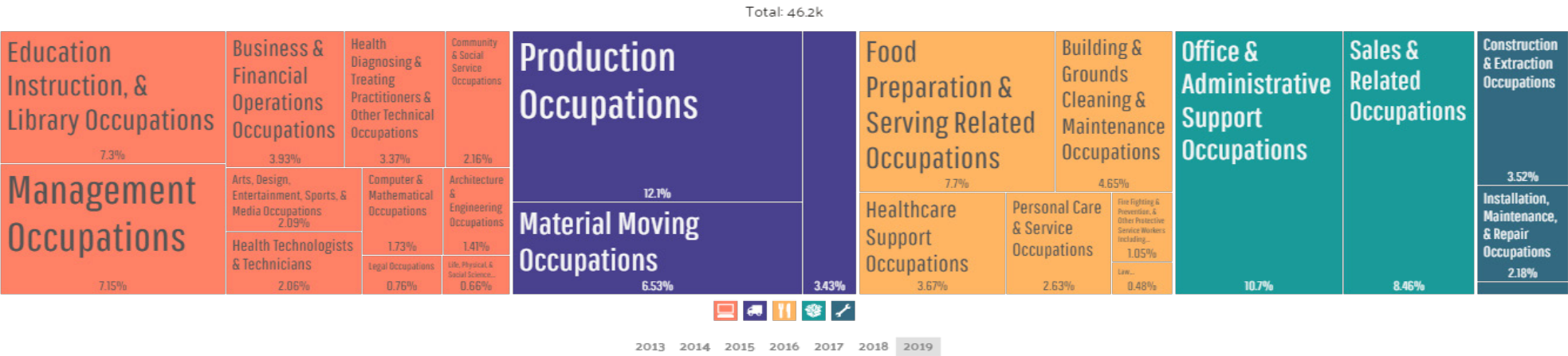
South Bend, IN is home to a population of 103k people. In 2019, there were 2 times more White (Non-Hispanic) residents (53.4k people) in South Bend, IN than any other race or ethnicity. There were 26.8k Black or African American (Non-Hispanic) and 9.54k White (Hispanic) residents, the second and third most common ethnic groups. 15.7% of the people in South Bend, IN are Hispanic (16.1k people). The following chart shows the 7 races represented in South Bend, IN as a share of the total population. (Source – Datausa.IO)⁴



Demographics and Labor Statistics

From 2018 to 2019, employment in South Bend, IN grew at a rate of 0.881%, from 45.8k employees to 46.2k employees.

The most common job groups, by number of people living in South Bend, IN, are Production Occupations (5,566 people), Office & Administrative Support Occupations (4,954 people), and Sales & Related Occupations (3,906 people). This chart illustrates the share breakdown of the primary jobs held by residents of South Bend, IN. (Source – Datausa.IO)⁵



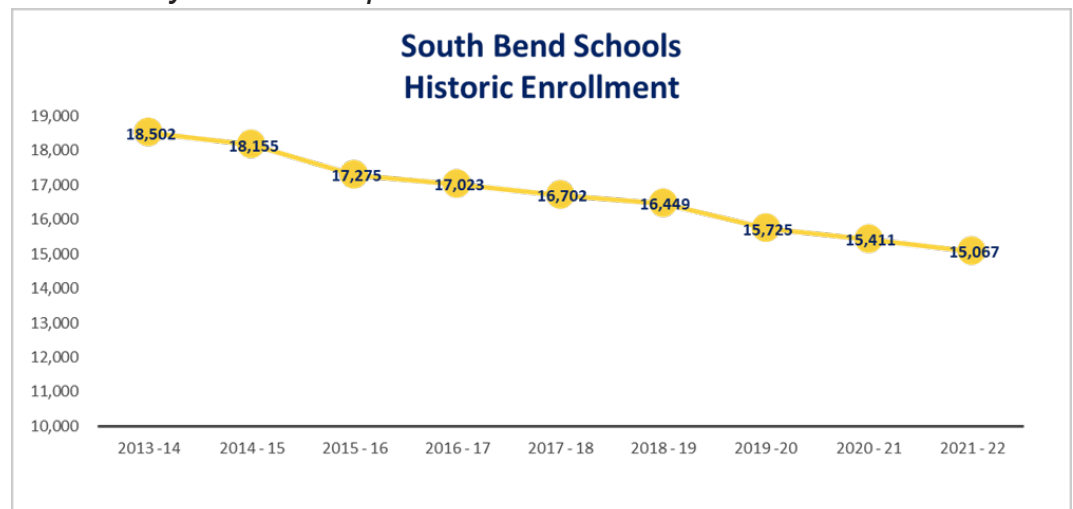
Historic Enrollment

Historic enrollment can often provide clues regarding a district's current and future needs. Tracking students as a "Cohort" or as a group over a specific time period enables a district to measure changes in student enrollment by grade. Below is 9 years of student enrollment data for South Bend Community School Corporation.

Historic Enrollment	2013 -14	2014 - 15	2015 - 16	2016 - 17	2017 - 18	2018 - 19	2019 -20	2020 - 21	2021 - 22
K	1,690	1,545	1,383	1,398	1,363	1,287	1,192	1,049	1,149
1	1,617	1,636	1,451	1,309	1,324	1,316	1,214	1,154	1,074
2	1,536	1,590	1,466	1,367	1,253	1,259	1,233	1,174	1,111
3	1,451	1,587	1,519	1,497	1,337	1,240	1,191	1,172	1,141
4	1,376	1,313	1,314	1,311	1,316	1,300	1,177	1,172	1,163
5	1,357	1,295	1,220	1,270	1,303	1,326	1,256	1,147	1,125
6	1,329	1,310	1,205	1,187	1,252	1,270	1,192	1,197	1,092
7	1,363	1,298	1,243	1,182	1,137	1,244	1,221	1,206	1,146
8	1,350	1,302	1,264	1,222	1,163	1,136	1,218	1,214	1,159
9	1,399	1,473	1,433	1,353	1,341	1,287	1,185	1,294	1,287
10	1,391	1,339	1,339	1,369	1,310	1,309	1,224	1,196	1,294
11	1,344	1,273	1,248	1,320	1,317	1,231	1,225	1,245	1,143
12	1,299	1,194	1,190	1,238	1,286	1,244	1,197	1,191	1,183
Totals	18,502	18,155	17,275	17,023	16,702	16,449	15,725	15,411	15,067

**Source: South Bend Community School Corporation*

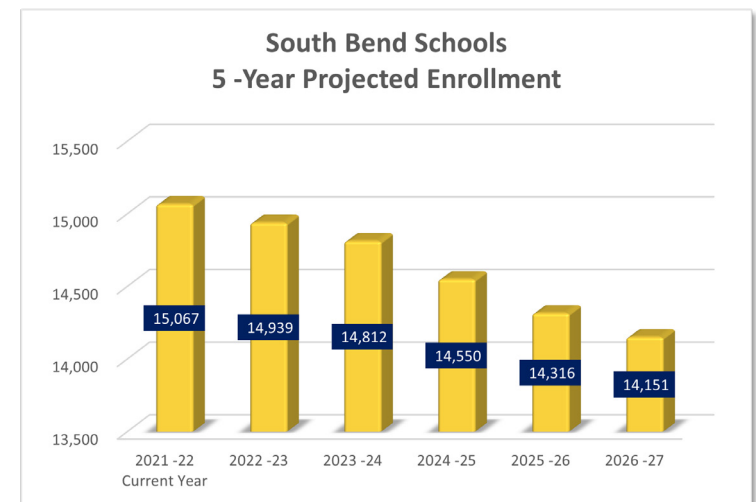
Grade Level Totals	K - 5	6 - 8	9 - 12	K - 12
2013 -14	9,027	4,042	5,433	18,502
2014 - 15	8,966	3,910	5,279	18,155
2015 - 16	8,353	3,712	5,210	17,275
2016 - 17	8,152	3,591	5,280	17,023
2017 - 18	7,896	3,552	5,254	16,702
2018 - 19	7,728	3,650	5,071	16,449
2019 -20	7,263	3,631	4,831	15,725
2020 - 21	6,868	3,617	4,926	15,411
2021 - 22	6,763	3,397	4,907	15,067



Enrollment Projections

South Bend Schools 5-Year Projected Enrollment						
	2021 - 22 Current Year	2022 -23	2023 -24	2024 -25	2025 -26	2026 - 27
K	1,149	1,291	1,288	1,279	1,296	1,296
1	1,074	1,256	1,233	1,230	1,222	1,237
2	1,111	1,136	1,196	1,175	1,170	1,162
3	1,141	1,056	1,109	1,166	1,145	1,140
4	1,163	1,055	989	1,038	1,092	1,073
5	1,125	1,113	1,047	977	1,025	1,078
6	1,092	1,049	1,065	1,001	932	977
7	1,146	1,084	1,021	1,034	974	906
8	1,159	1,145	1,072	1,009	1,022	963
9	1,287	1,235	1,240	1,159	1,087	1,108
10	1,294	1,258	1,192	1,199	1,123	1,050
11	1,143	1,208	1,195	1,131	1,137	1,063
12	1,183	1,053	1,165	1,152	1,091	1,098

	K - 5	6 - 8	9 - 12	K - 12
2021 -22	6,763	3,397	4,907	15,067
2022 -23	6,907	3,278	4,754	14,939
2023 -24	6,862	3,158	4,792	14,812
2024 -25	6,865	3,044	4,641	14,550
2025 -26	6,950	2,928	4,438	14,316
2026 -27	6,986	2,846	4,319	14,151



Capacity & Utilization



Functional Capacity

FUNCTIONAL CAPACITY METHODOLOGY

The functional capacity approach is based on an inventory of all instructional spaces and their current use. This information was collected as part of educational program space assessment.

ELEMENTARY

The elementary program is usually delivered based on students being assigned a homeroom and attending specials, such as art and music, in a specialized classroom. The art and music rooms do not receive a capacity calculation because when students attend these classes, they are vacating their homeroom, and another class does not fill in that space while students are attending art or music. The number of special classrooms should be a reflection of the enrollment of the building. Facilities with higher enrollments might require more than one art room and/or music room. The capacity of the elementary facility is determined by taking the total number of classrooms minus the special purpose classrooms (art, music, etc.) multiplied by the number of students per classroom, 22 for Grades K through 4 and 25 for Grade 5. One exception would be the calculation of special education spaces. Special education classrooms have a capacity of 10 students.

SECONDARY (MIDDLE GRADES AND HIGH SCHOOL)

Unlike in elementary schools, middle and high school students typically change classes each period or block. It is very difficult to schedule every classroom every period of the day. Middle school classrooms are programmed for use six out of seven periods a day, or 85 percent. High school classrooms are programmed similarly to middle schools, but since high schools offer more specialized courses, scheduling is less efficient than at middle schools. An 85 percent utilization factor at a high school accommodates these inherent scheduling challenges, while promoting a reasonable efficiency standard. A 75 percent utilization factor also accommodates block scheduling, where a class is used three out of four periods in a day.

District Capacity Summary

UTILIZATION

The utilization of a school is determined by dividing the current enrollment into the calculated capacity of the facility. For example, a school with a capacity of 100 students and current student enrollment of 75 would result in a utilization of 75 percent. By analyzing the utilization, state and district government bodies can identify locations where severe under or over utilization rates exist, and then use this data to assist in master planning.

It is important to note that 100 percent utilization is not ideal; while standards vary by state and district, typical desired utilization rates would be 95 percent for elementary schools, and between 75-85 percent for middle and high schools. This 15-25 percent utilization factor accounts for the inherent room use inefficiencies associated with a variety of course offerings. The greater the diversity of courses offered and smaller the class size, the greater building use inefficiencies are introduced. The resulting utilization rates presented in this report do not account for these inefficiencies. Generally speaking, a high school with a utilization score at or near 85 percent can be considered to be reasonably utilized, with reasonable middle school utilization also near 85 percent and reasonable elementary school utilization at 95 percent.

Facility Data - Capacity + Utilization

The facility table and charts below show a cross comparison of the size and utilization of the district's buildings

ELEMENTARY SCHOOLS					
Schools	Square Footage	Capacity	2021-22 Enrollment	Utilization	Sq. Foot by Student
Coquillard ES*	73,806	439	312	71.07%	236.6
Darden ES	107,993	762	518	67.98%	208.5
Harrison ES*	120,263	634	586	92.43%	205.2
Kennedy ES	85,829	521	570	109.40%	150.6
Lincoln ES	109,809	632	423	66.93%	259.6
Madison ES	87,803	590	635	107.63%	138.3
Marquette ES**	79,506	536	430	80.22%	184.9
Marshall ES*	97,078	842	384	45.61%	252.8
McKinley ES	70,869	422	468	110.90%	151.4
Monroe ES	103,578	608	425	69.90%	243.7
Muessel ES*	94,278	502	269	53.59%	350.5
Nuner ES	89,772	498	506	101.61%	177.4
Swanson ES	69,869	606	384	63.37%	182.0
Warren ES*	60,851	338	227	67.16%	268.1
Wilson ES*	76,782	458	400	87.34%	192.0
ES Totals	1,328,086	8,388	6,537	77.93%	203.2

* Enrollment includes 1/2 day Pre-K

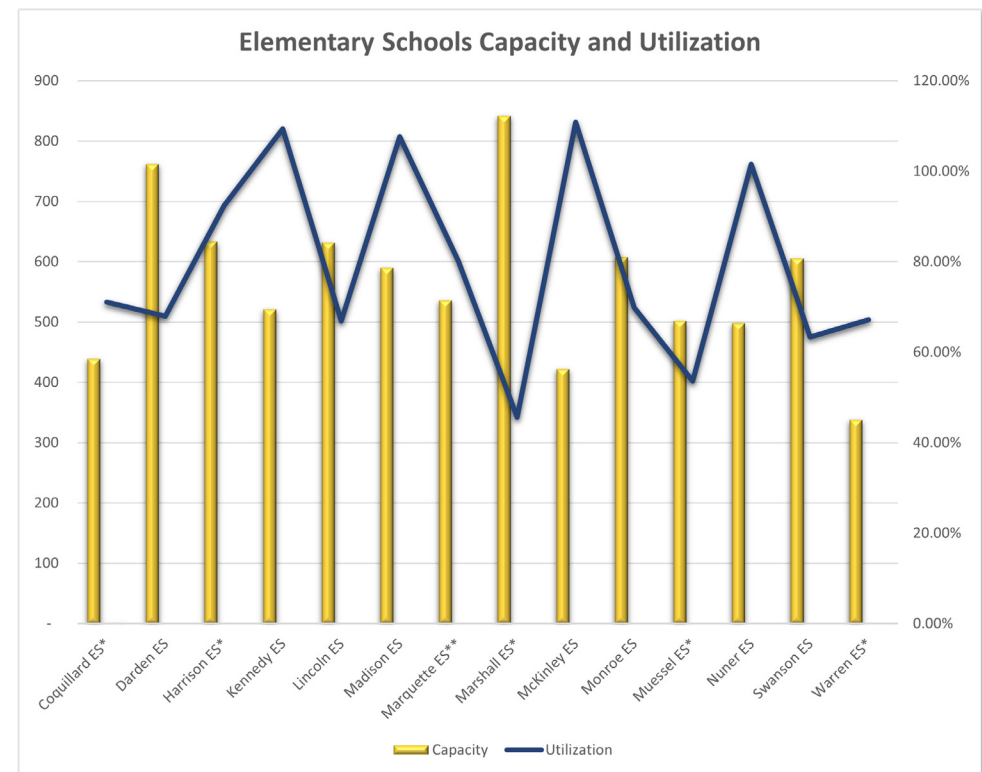
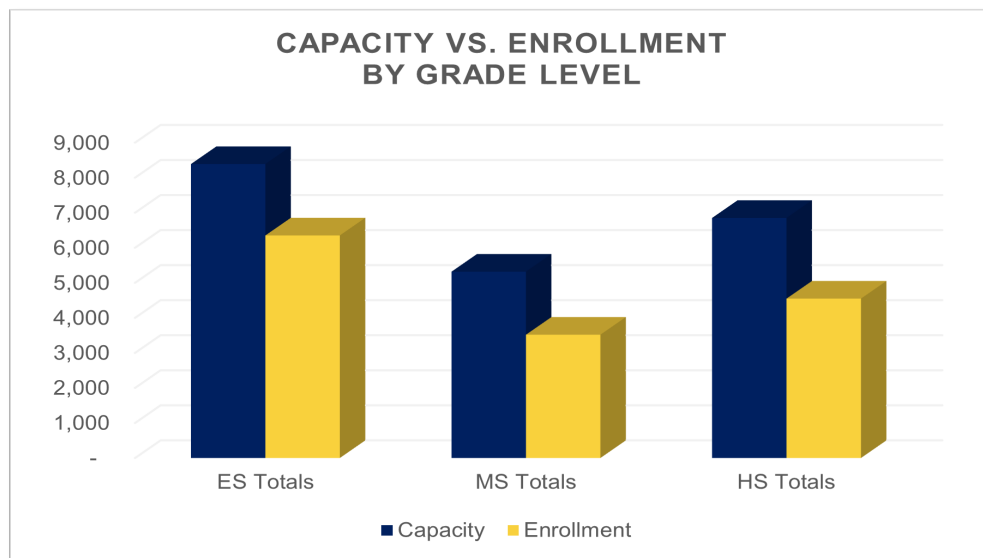
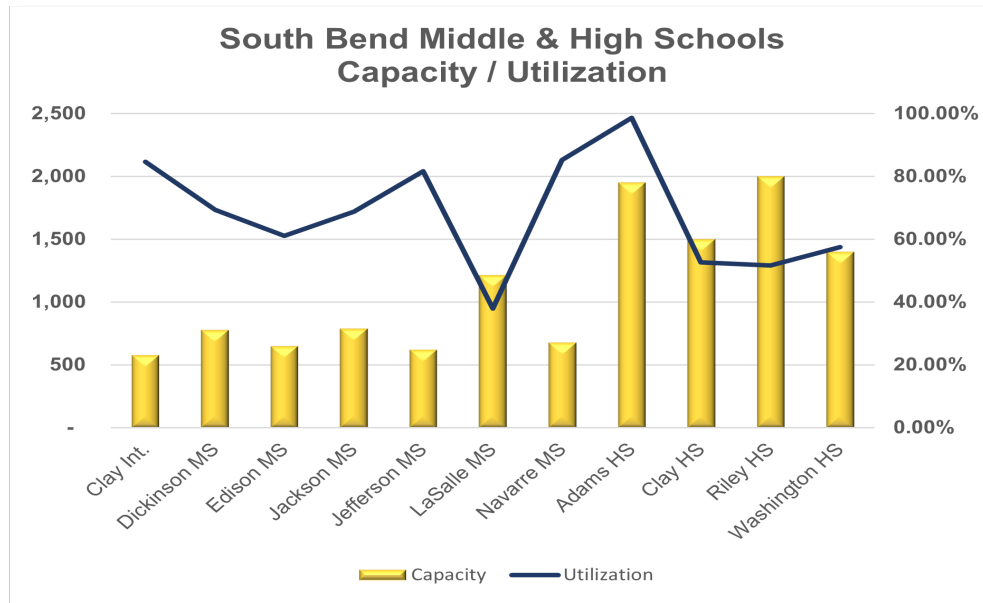
** Enrollment includes full day Pre-K

MIDDLE SCHOOLS					
Schools	Square Footage	Capacity	2021-22 Enrollment	Utilization	Sq. Foot by Student
Clay Int.	151,141	580	491	84.66%	307.8
Dickinson MS	147,797	780	541	69.36%	273.2
Edison MS	185,180	650	397	61.08%	466.4
Jackson MS	165,000	790	543	68.73%	303.9
Jefferson MS	108,490	621	507	81.64%	214.0
LaSalle MS	264,013	1,216	460	37.83%	573.9
Navarre MS	140,685	680	579	85.15%	243.0
MS Totals	1,162,306	5,317	3,518	66.17%	330.4

HIGH SCHOOLS					
Schools	Square Footage	Capacity	2021-22 Enrollment	Utilization	Sq. Foot by Student
Adams HS	393,851	1,950	1,922	98.56%	204.92
Clay HS	282,489	1,500	789	52.60%	358.03
Riley HS	348,064	2,000	1,033	51.65%	336.94
Washington HS	261,923	1,400	804	57.43%	325.77
HS Totals	1,286,327	6,850	4,548	66.39%	282.8

Facility Data - Capacity + Utilization

The facility table and charts below show a cross comparison of the size and utilization of the district's buildings



Facility Data - Cost per Student

The facility tables below show a comparison of cost per student across the district. Cost per student is determined by taking a facility's operating cost and dividing it by student enrollment. This breakdown takes into consideration operating costs with teachers' salaries and without teachers' salaries.

HIGH SCHOOLS COST PER STUDENT						
School	Teachers	Operating	Total Facility Cost	2021-22 Enrollment	Cost per Student with Teachers	Cost per Student Without Teachers
Adams	\$9,585,188	\$1,413,427	\$10,998,615	1,922	\$5,722	\$735
Clay	\$7,231,246	\$1,091,945	\$8,323,191	789	\$10,549	\$1,384
Riley	\$7,435,732	\$1,346,024	\$8,781,756	1,033	\$8,501	\$1,303
Washington	\$5,349,938	\$985,406	\$6,335,344	804	\$7,880	\$1,226

MIDDLE SCHOOLS COST PER STUDENT						
School	Teachers	Operating	Total Facility Cost	2021-22 Enrollment	Cost per Student with Teachers	Cost per Student Without Teachers
Clay IA	\$3,293,749	\$616,514	\$3,910,262	491	\$7,964	\$1,256
Dickinson	\$3,186,488	\$593,808	\$3,780,296	541	\$6,988	\$1,098
Edison MS	\$3,972,166	\$624,698	\$4,596,864	397	\$11,579	\$1,574
Jackson MS	\$3,309,800	\$736,001	\$4,045,801	543	\$7,451	\$1,355
Jefferson MS	\$3,097,010	\$547,189	\$3,644,199	507	\$7,188	\$1,079
Lasalle MS	\$3,227,911	\$801,263	\$4,029,174	460	\$8,759	\$1,742
Navarre MS	\$4,186,997	\$585,896	\$4,772,893	579	\$8,243	\$1,012

ELEMENTARY SCHOOLS COST PER STUDENT						
School	Teachers	Operating	Total Facility Cost	2021-22 Enrollment	Cost per Student with Teachers	Cost per Student Without Teachers
Coquillard ES	\$2,169,097	\$312,369	\$2,481,466	312	\$7,953	\$1,001
Darden ES	\$4,176,999	\$398,647	\$4,575,646	518	\$8,833	\$770
Harrison ES	\$4,143,348	\$501,297	\$4,644,645	586	\$7,926	\$855
Kennedy ES	\$3,101,987	\$394,807	\$3,496,794	570	\$6,135	\$693
Lincoln ES	\$3,952,714	\$469,115	\$4,421,829	423	\$10,453	\$1,109
Madison ES	\$3,687,874	\$493,587	\$4,181,461	635	\$6,585	\$777
Marquette ES	\$3,051,065	\$343,681	\$3,394,746	430	\$7,895	\$799
Marshall ES	\$2,849,097	\$333,747	\$3,182,844	384	\$8,289	\$869
McKinley ES	\$3,478,666	\$321,102	\$3,799,768	468	\$8,119	\$686
Monroe ES	\$4,024,792	\$394,049	\$4,418,841	425	\$10,397	\$927
Muessel ES	\$2,093,395	\$350,331	\$2,443,726	269	\$9,084	\$1,302
Nuner ES	\$3,679,519	\$402,455	\$4,081,974	506	\$8,067	\$795
Swanson ES	\$2,762,605	\$343,626	\$3,106,231	384	\$8,089	\$895
Warren ES	\$1,796,747	\$233,965	\$2,030,712	227	\$8,946	\$1,031

Educational Programing



Educational Programing

These are the current program offerings at each school in the district.

Adams High School

- International Bac.
- Math Technology

Clay High School

- Fine arts
- Auto Technology
- Welding
- Culinary Arts
- Education
- Emergency Medicine
- Health science
- Graphic design

Riley High School

- PLTW
- Construction Technology
- Criminal Justice
- Entrepreneurship
- Human Social Science
- Audio/ Visual
- PC/ Network Support
- Sports/ Entertainment Marketing

Washington High School

- Medical
- Criminal Justice
- Early Childhood

Clay international

- International Bac.
- Pre-School
- Bright Beginings (AM care)

Dickinson Middle School

- Fine Arts

Jefferson Middle School

- Traditional

Lincoln Elementary School

- Pre-Schools

Marshall Elementary School

- Traditional
- Pre-School
- Bright Beginnings (AM)
- Kaleidoscope (PM)

Muessel Elementary School

- Transformation
- Pre-School

Nuner Elementary School

- Fine arts
- Pre-School

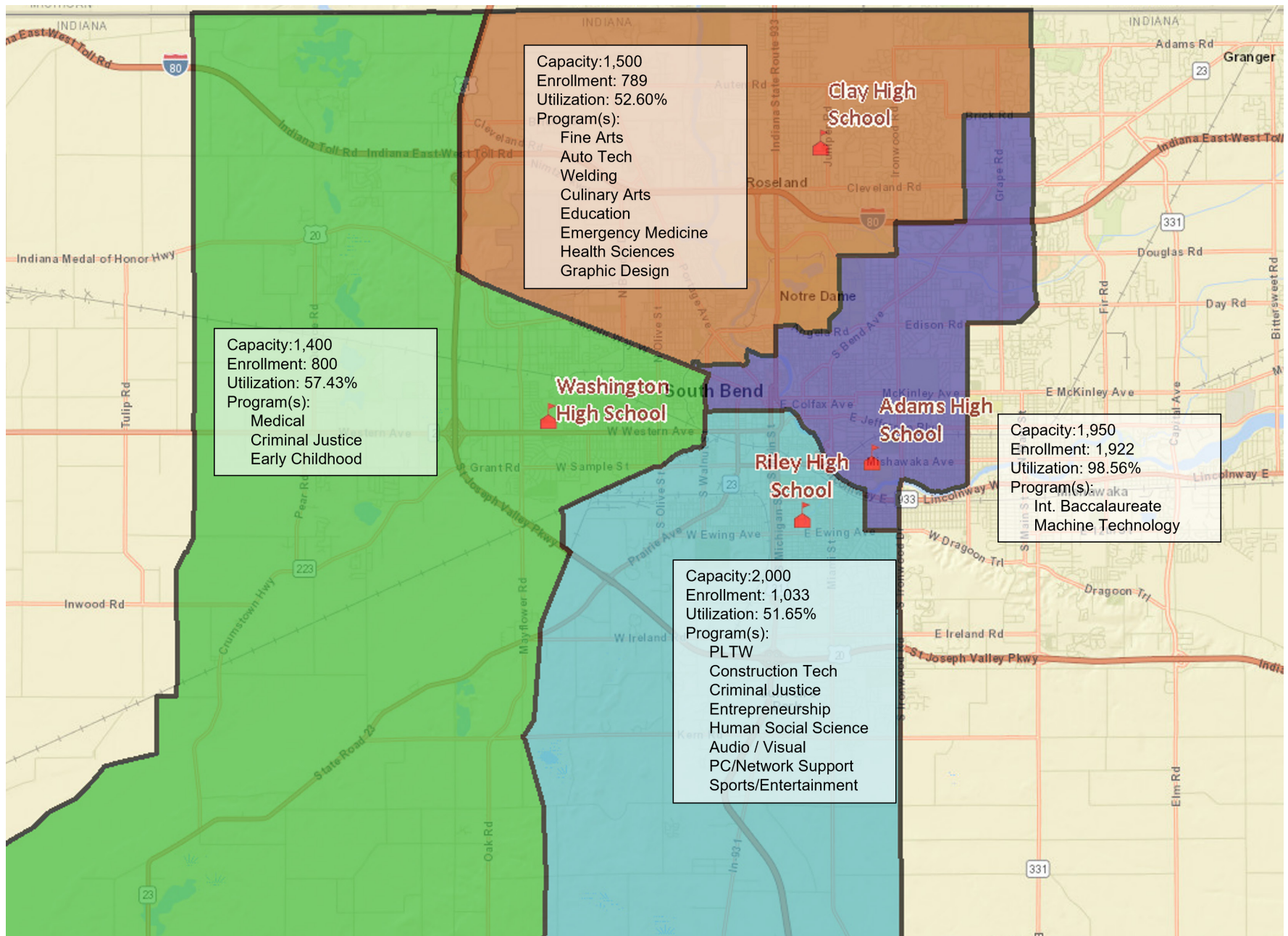
Swanson Elementary School

- Transformation
- Pre-School
- Bright Beginnings (AM)
- Kaleidoscope (PM)

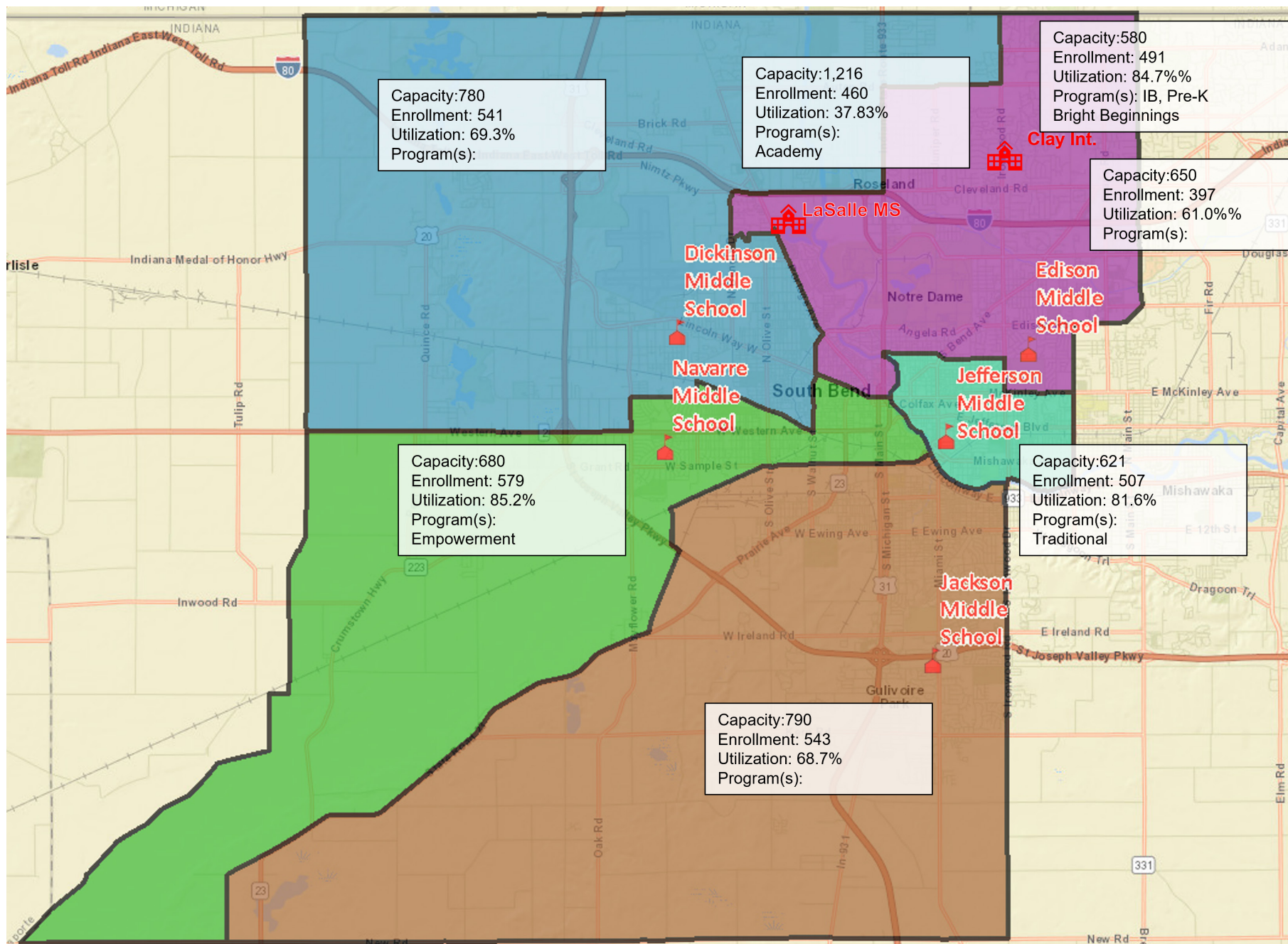
Empowerment

- Coquillard, Elementary School
- Harrison Elementary School
- Warren Elementary School
- Wilson Elementary School
- Navarre Elementary School

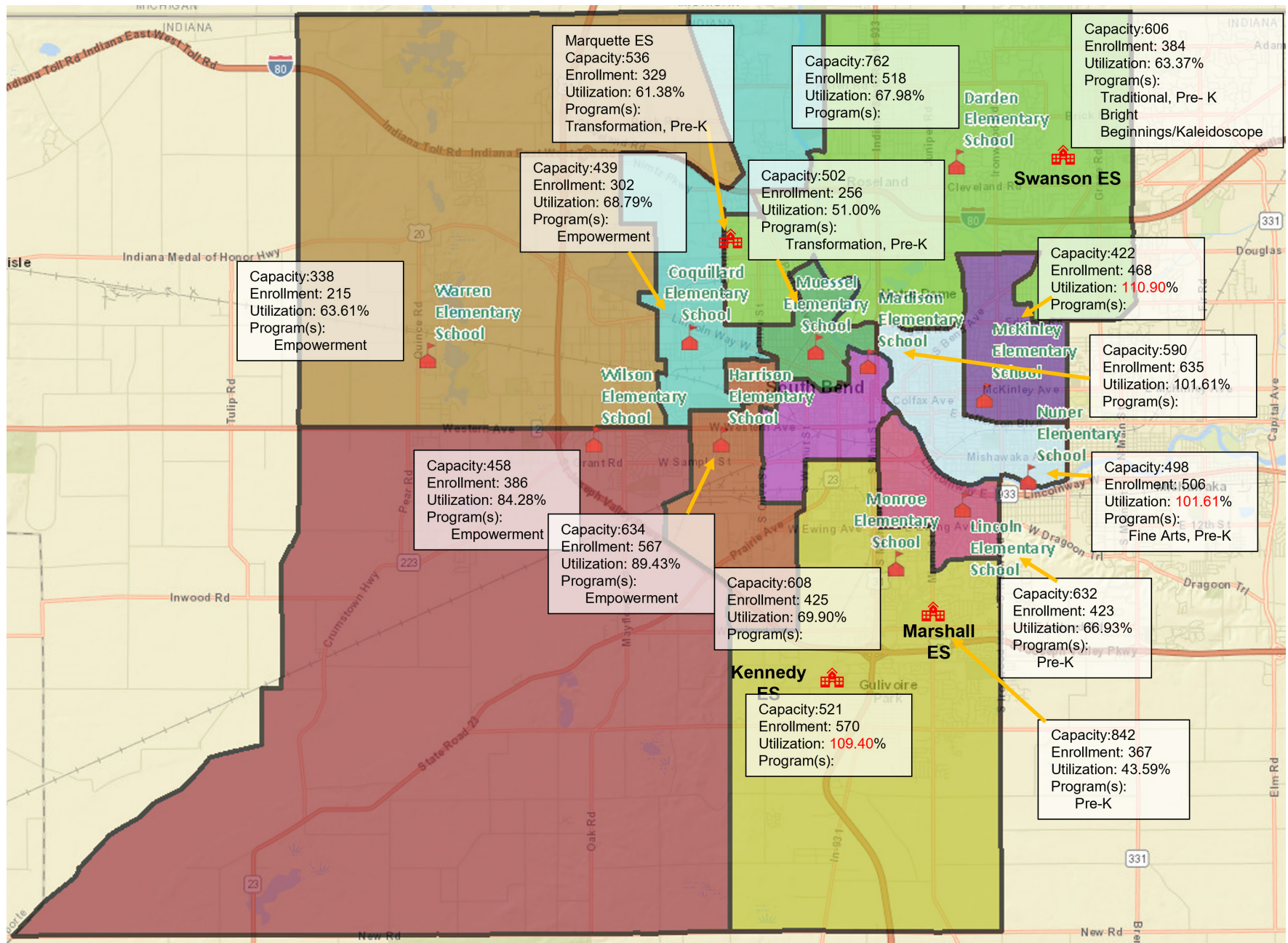
Comprehensive District Map - High School



Comprehensive District School Map - Middle School



Comprehensive District Map - Elementary School



Educational Adequacy



Educational Adequacy

OVERVIEW

A critical component to functional equity across the broad spectrum of South Bend Consolidated School District is educational adequacy. The Educational Adequacy Index [EAI] is used as a comparative indicator to identify the relative programmatic needs of a facility, group of buildings, or an entire portfolio.

Not only used as a way to compare facilities, an educational adequacy assessment is imperative to determine how well a renovated school will support teaching curriculum. Decision makers must evaluate the cost trade-off using an educationally inferior facility for long term use.

An educational adequacy assessment evaluates how well a campus is equipped to deliver the current instructional curriculum. The assessment answers such questions as the following:

- Is the classroom the correct size?
- Are labs appropriately equipped?
- Does technology support the classroom activities?
- Are there adequate provisions for administration, guidance, and tutorial areas?
- Does the building include all of the spaces to deliver the desired educational program?
- Are the core spaces [cafeterias, gyms, library/media centers] present, of sufficient size, and appropriately equipped?
- Are the desired outdoor activities present

Educational Adequacy

METHODOLOGY & PROCESS

In order to provide an educational adequacy assessment with objective and consistent results, a collection instrument was developed by HPM based and reviewed by SBCSD curriculum and facility personnel. From July 19th through July 30th 2021, a team of two [2] assessors and often accompanied by district personnel, conducted a survey of 16 elementary schools, 5 junior high schools, and 4 high schools and reviewed approximately 2.5 million square feet of educational space.

The table below lists a sample of key requirements. Again, not all requirements were checked in each space type, the requirements change depending on if you are assessing a science lab versus a P.E. Office.

In the Educational Adequacy form each space type is then ranked with a 0, 1 or 2 (0= does not exist, 1 exist but not to standards, 2= exists and is up to standards), stating whether or not the space has the necessary requirements and if that requirement is deemed adequate. Each category is rated on a five-point scale, for a total possible score of 30 points. As you can see from the list, some items are subjective and up to the discretion of the assessor. For example, sufficient storage casework, and access to direct natural light are up to the discretion of the assessors. We do use the same set of assessors completing each facility so that requirements may be compared against each other from facility to facility. This gives you a consistent measurement of each of the requirements for all facilities assessed.

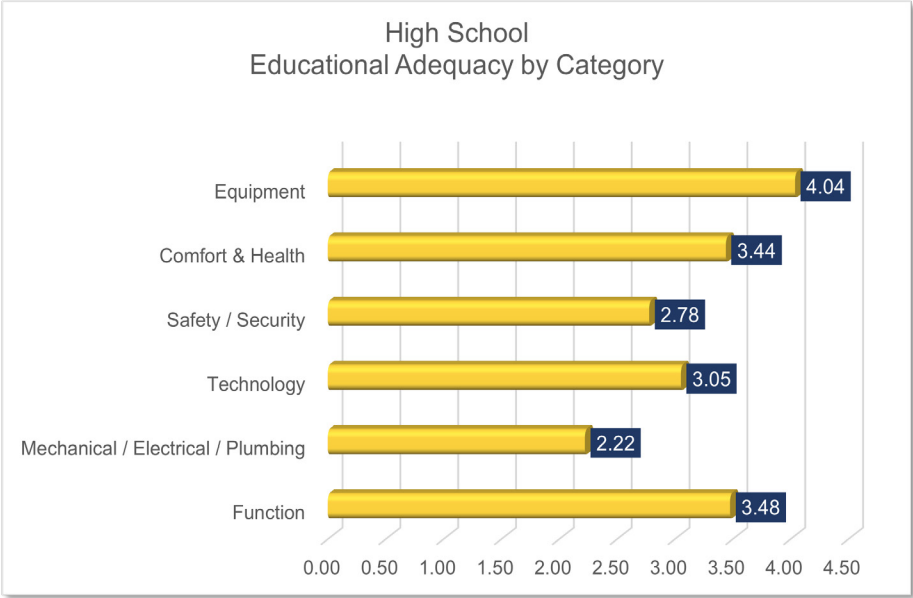
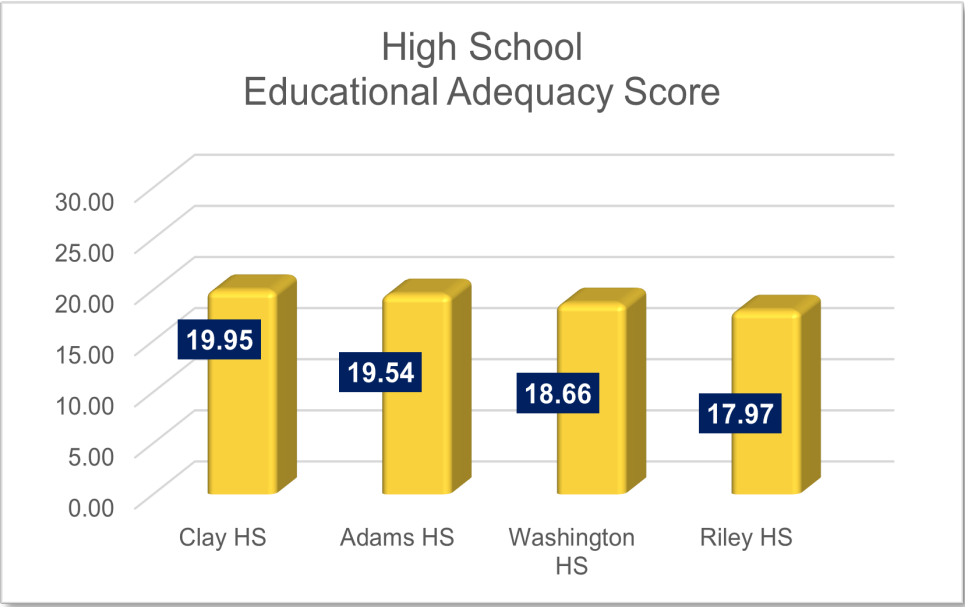
Also, it is important to understand that an Educational Adequacy does NOT measure the condition of an item, the intent is to observe if that standard item exists. A separate Facility Condition Assessment was conducted

Function
Appropriate Square Feet
Storage
Teacher Work Station
Mechanical / Electrical / Plumbing
Outlets / Charging Stations
Water / Water Bottle Stations
General Exhaust
Technology
Electronics
Telephones / Clocks
Wireless Connectivity
Safety and Security
Door Locks and Securability
First Aid Kits / Fire Extinguisher
Cameras
Comfort and Health
Natural Daylighting
Independent Air Control
Sound Enhancement
Equipment
Furniture
Gymnasium Equipment
Choral Risers

Educational Adequacy - High School Overview

HS Educational Adequacy Summary	Function	Mechanical / Electrical / Plumbing	Technology	Safety / Security	Comfort & Health	Equipment	Total
Classrooms	4.52	1.93	3.30	1.94	3.71	4.79	20.19
Science	3.35	2.69	3.30	3.26	3.98	4.81	21.40
Special Education	3.75	1.69	3.24	2.16	3.58	2.60	17.01
Career Tech	2.88	2.15	2.95	3.63	3.43	4.80	19.83
Physical Education	3.31	2.76	2.12	3.08	2.43	3.44	17.15
Arts	3.05	2.13	3.41	2.60	3.51	3.79	18.49
AVERAGE	3.48	2.22	3.05	2.78	3.44	4.04	19.01

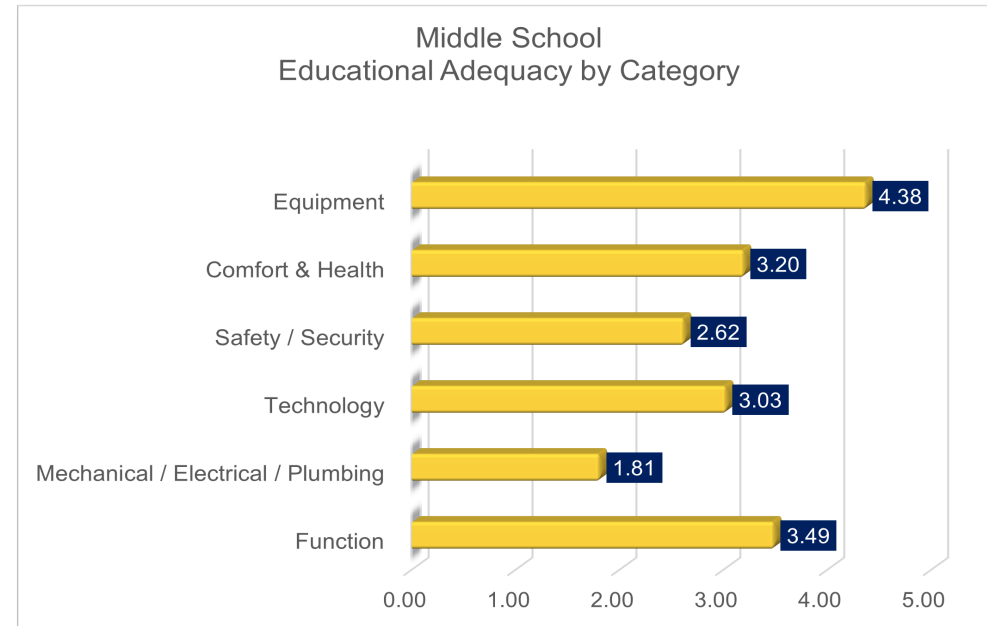
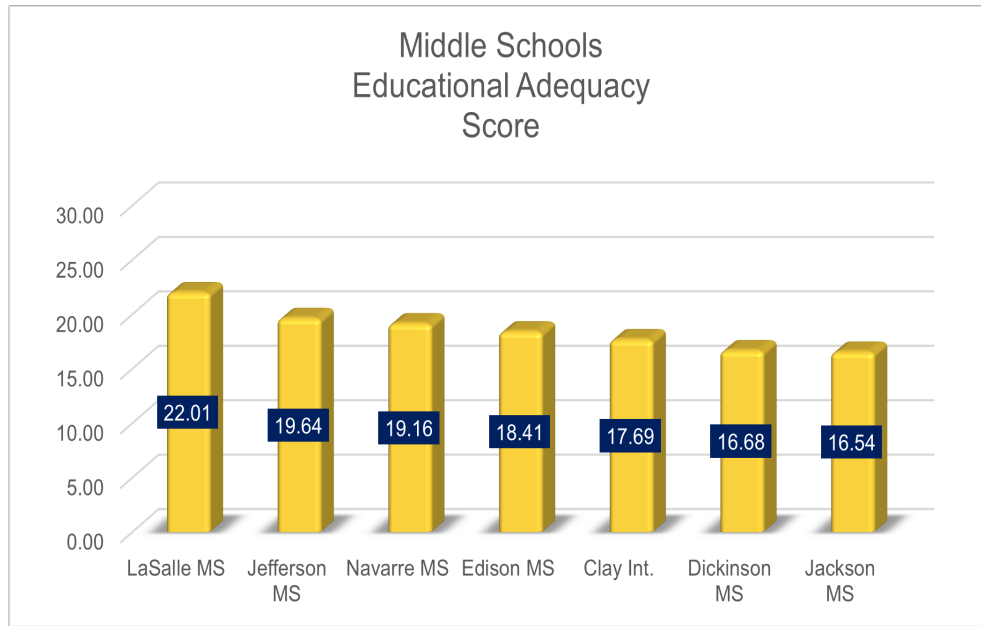
*Based on rating scale of 1 to 35



Educational Adequacy - Middle School Overview

Summary	Function	Mechanical / Electrical / Plumbing	Technology	Safety / Security	Comfort & Health	Equipment	Total
Classrooms	3.87	2.05	3.24	2.15	4.15	4.70	20.15
Science	3.59	2.13	3.29	3.29	3.93	4.58	20.80
Special Education	2.92	1.34	3.13	2.63	2.58	4.48	17.08
Career Tech	3.76	1.95	2.88	2.92	2.90	4.10	18.50
Physical Education	3.60	2.12	2.73	2.91	2.26	4.71	18.32
Arts	3.21	1.29	2.91	1.85	3.38	3.68	16.33
AVERAGE	3.49	1.81	3.03	2.62	3.20	4.38	18.53

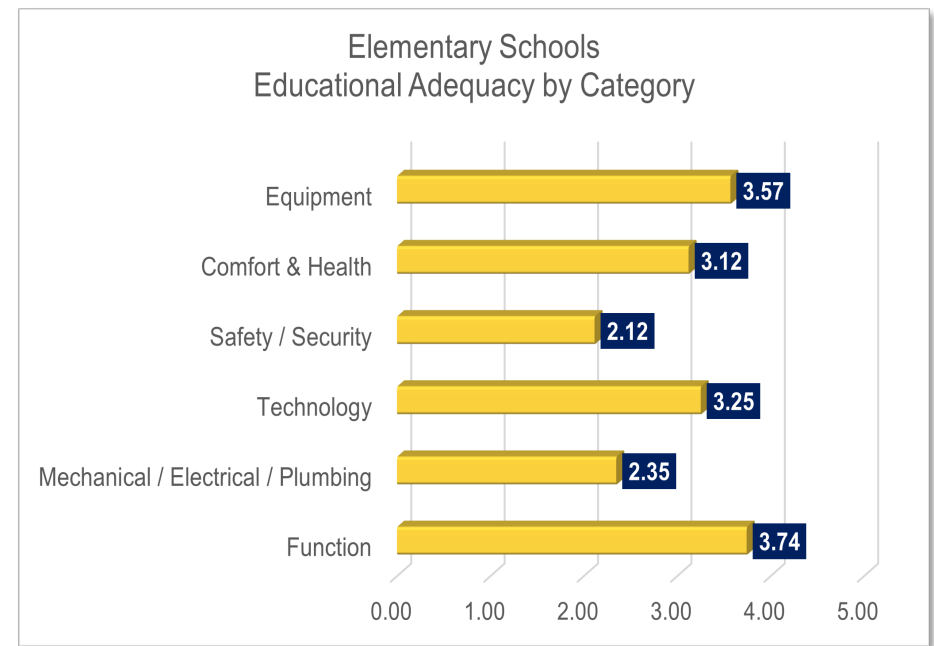
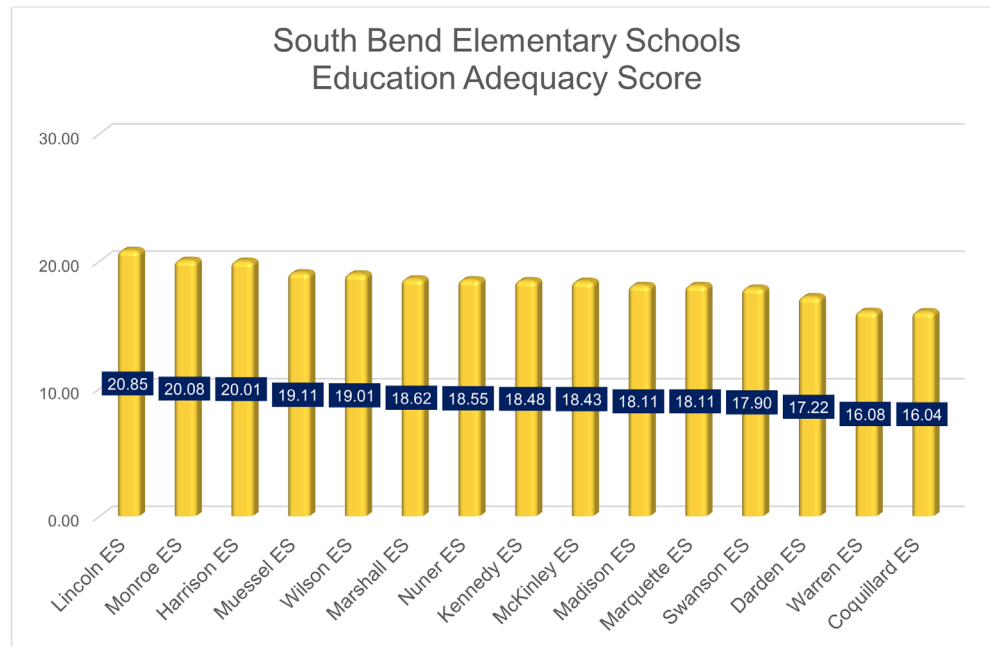
*Based on rating scale of 1 to 35



Educational Adequacy - Elementary School Overview

Elementary School Educational Adequacy Summary	Function	Mechanical / Electrical / Plumbing	Technology	Safety / Security	Comfort & Health	Equipment	Total
Classrooms	4.39	3.28	4.22	1.71	3.98	4.07	21.65
Special Education	2.62	1.95	3.90	1.62	3.78	4.37	18.23
Career Tech	3.49	2.03	2.83	1.81	2.69	2.79	15.64
Physical Education	4.09	2.06	2.15	3.18	2.37	3.44	17.28
Arts	4.14	2.41	3.17	2.26	2.79	3.19	17.96
AVERAGE	3.74	2.35	3.25	2.12	3.12	3.57	18.15

*Based on rating scale of 1 to 35



Educational Adequacy - Score Summary

High School	Educational Adequacy Score
Clay HS	19.95
Adams HS	19.54
Washington HS	18.66
Riley HS	17.97

Middle School	Educational Adequacy Score
LaSalle MS	22.01
Jefferson MS	19.64
Navarre MS	19.16
Edison MS	18.41
Clay Int.	17.69
Dickinson MS	16.68

Elementary School	Educational Adequacy Score
Lincoln ES	20.85
Monroe ES	20.08
Harrison ES	20.01
Muessel ES	19.11
Wilson ES	19.01
Marshall ES	18.62
Nuner ES	18.55
Kennedy ES	18.48
McKinley ES	18.43
Madison ES	18.11
Marquette ES	18.11
Swanson ES	17.90
Darden ES	17.22
Warren ES	16.08
Coquillard ES	16.04

*Based on rating scale of 1 to 35

Condition Assessment



Condition Assessment

The Facility Condition Assessments address the physical condition of each school facility and their respective site conditions. This was accomplished through in-person site visits to each of the schools by our team of Architects, Landscape Architects, and Engineers. Fanning Howey shared these responsibilities with team members from our partner firm, HCO Architects.

The purpose of these condition assessments was to ultimately create a comparative evaluation of facilities as a tool to further assist the corporation in determining investment strategies. There were a total of 41 structures evaluated, which included 27 schools and 14 support / closed / re-purposed buildings. This State of the School Report focuses on the twenty-seven operational corporation schools, made up of 15 Elementary Schools, 7 Middle Schools and 5 High Schools.

Each school facility was reviewed and graded on Five (5) primary categories:

- Site Circulation and Amenities
- Safety and Security
- Building Envelope
- Building Interior Environment
- Building Systems

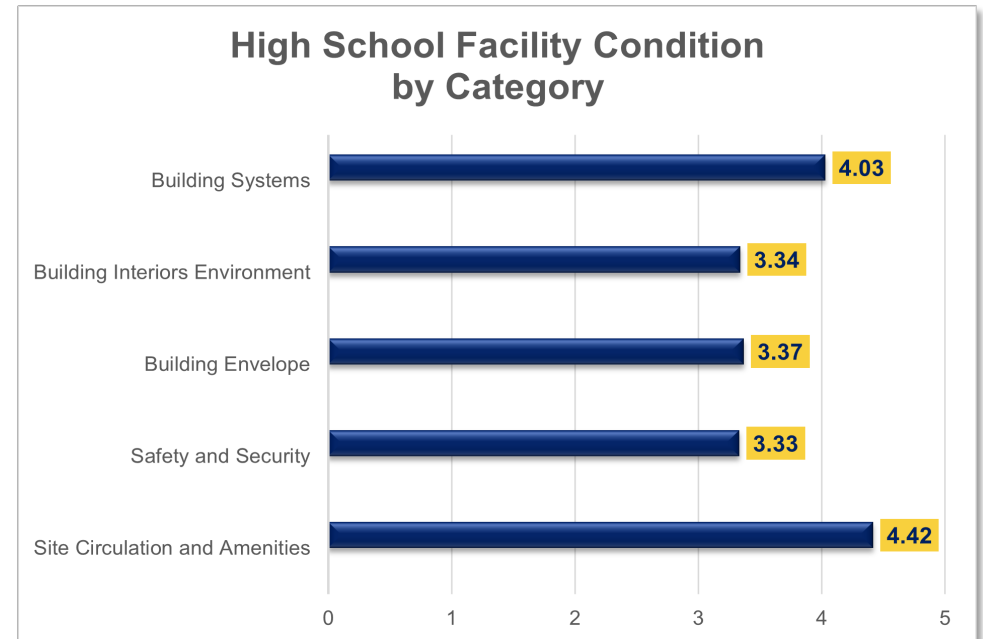
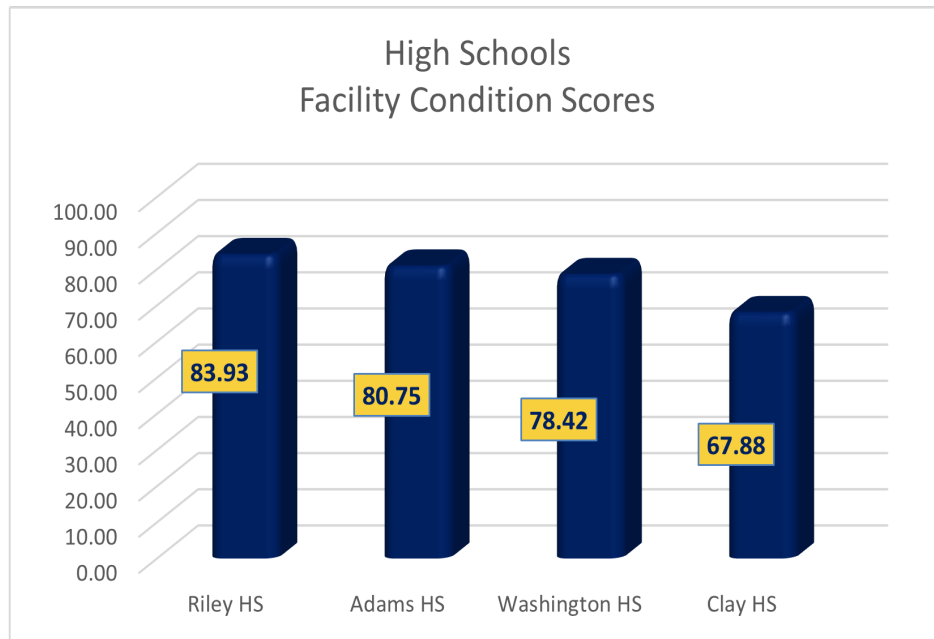
Within these five primary categories was a total of 20 Building Condition elements that were evaluated on a scale of 1 to 5, with 1 being poor/ non-existent and 5 being excellent. Each facility had a potential score of 100, similar to a traditional grading scale of 0 to 100. Upon completion of the individual Facility Condition Assessments, a high-level Comparative Facility Condition Assessment was generated for each grade level grouping of Elementary Schools, Middle Schools and High Schools.

It should be noted that these Facility Condition Assessments are based solely on physical conditions of a facility and are not reflective of school operations, educational adequacy or efficacy. The High Level Comparative Facility Assessments are found on the following pages.

A Site Circulation and Amenities	
	Car / Bus Drop-off/ Pick-up / Stacking
	Drives, Lots, and Walks
	Fields/ Playgrounds /Site Improvements
B Safety and Security	
	Secure Visitor Access
	Surveillance / Cameras
C Building Envelope	
	Roofs
	Walls
	Windows / Doors
D Building Interiors Environment	
	ADA / Accessibility
	Floors
	Ceilings
	Doors
	Fixed Equipment (Casework/ Lockers / Bleacher
	Restrooms
E Building Systems	
	Technology
	Electrical
	Lighting
	Temperature Control
	HVAC
	Plumbing Systems / Fixtures
Total Building Condition	

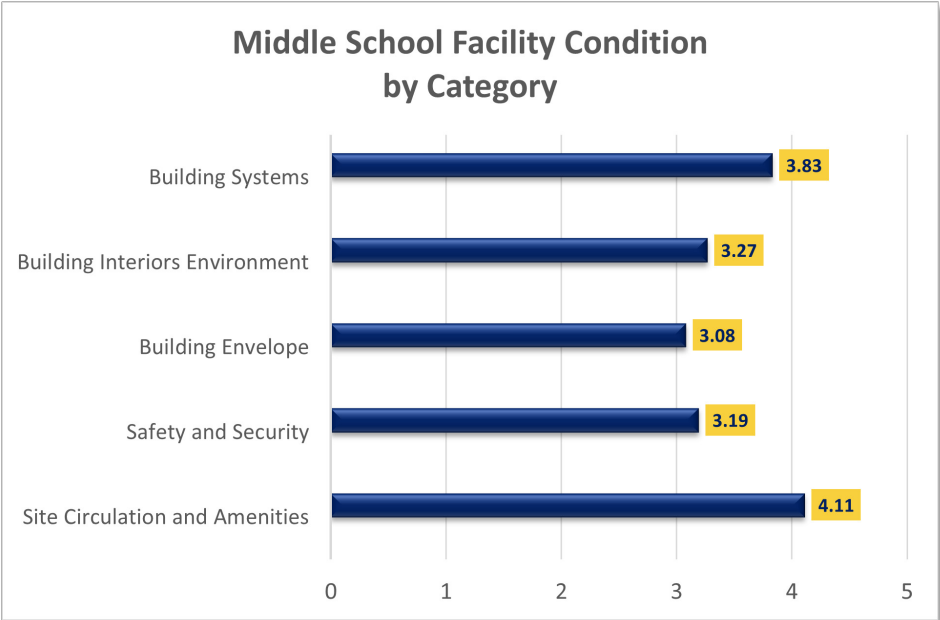
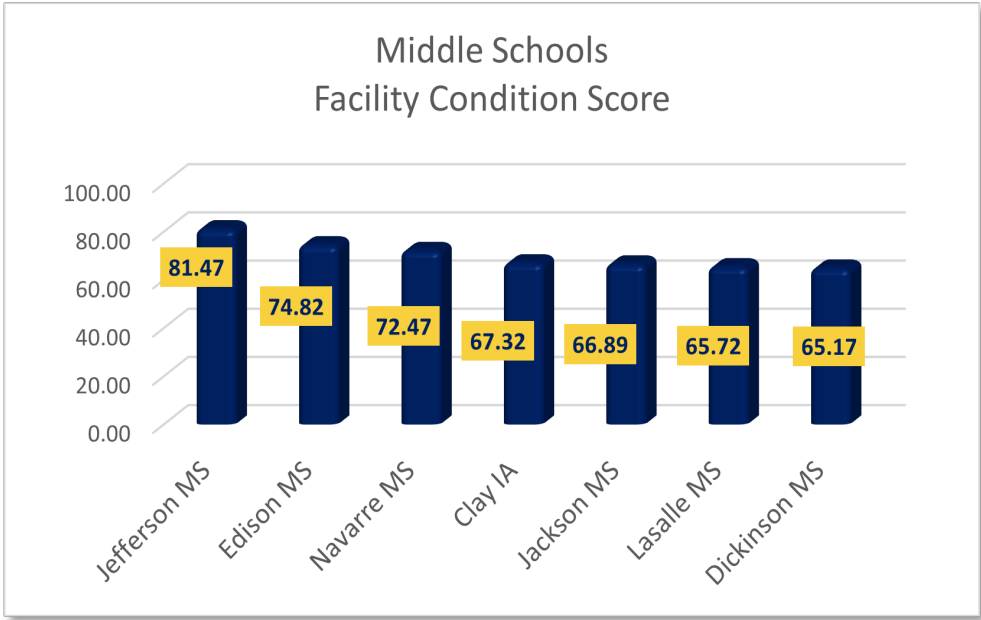
Condition Assessment - High School Overview

South Bend High Schools Facilities Condition Assessment by System Average	Car / Bus Drop-off/ Pick-up / Stacking	Drives, Lots, and Walks	Fields/ Playgrounds /Site Improvements	Secure Visitor Access	Surveillance / Cameras	Roofs	Walls	Windows / Doors	ADA / Accessibility	Floors	Ceilings	Doors	Fixed Equipment (Casework/ Lockers / Bleacher	Restrooms	Technology	Electrical	Lighting	Temperature Control	HVAC	Plumbing Systems / Fixtures	Average
	4.37	4.28	4.60																		4.42
				2.87	3.80																3.33
						3.60	3.40	3.11													3.37
									3.36	3.47	2.88	3.38	3.83	3.83							3.46
Building Systems															4.51	4.10	3.93	3.40	3.98	4.26	4.03



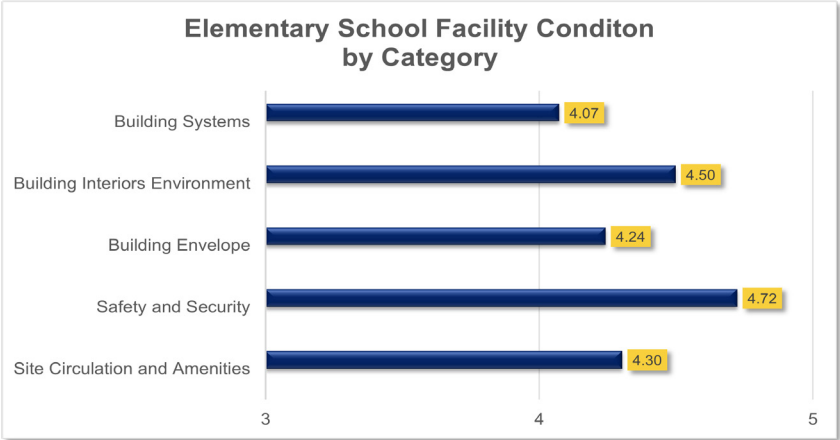
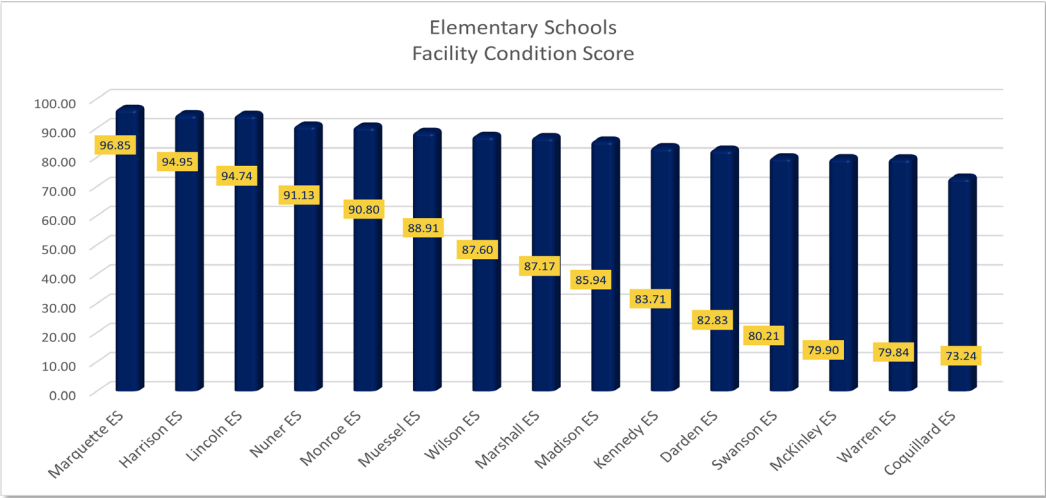
Condition Assessment - Middle School Overview

South Bend Middle Schools Facilities Condition Assessment by System Average	Car / Bus Drop-off/ Pick-up / Stacking	Drives, Lots, and Walks	Fields/ Playgrounds /Site Improvements	Secure Visitor Access	Surveillance / Cameras	Roofs	Walls	Windows / Doors	ADA / Accessibility	Floors	Ceilings	Doors	Fixed Equipment (Casework/ Lockers / Bleacher	Restrooms	Technology	Electrical	Lighting	Temperature Control	HVAC	Plumbing Systems / Fixtures	Average
Site Circulation and Amenities	4.68	3.31	4.34																		4.11
Safety and Security				3.81	2.57																3.19
Building Envelope						2.64	3.40	3.19													3.08
Building Interiors Environment									3.11	3.32	3.71	2.94	2.89	3.63							3.27
Building Systems															4.51	3.62	3.99	3.29	3.64	3.96	3.83



Condition Assessment - Elementary School Overview

South Bend Elementary Schools Facilities Condition Assement by System Average	Car / Bus Drop-off/ Pick-up / Stacking	Drives, Lots, and Walks	Fields/ Playgrounds /Site Improvements	Secure Visitor Access	Surveillance / Cameras	Roofs	Walls	Windows / Doors	ADA / Accessibility	Floors	Ceilings	Doors	Fixed Equipment (Casework/ Lockers / Bleacher	Restrooms	Technology	Electrical	Lighting	Temperature Control	HVAC	Plumbing Systems / Fixtures	Average
Site Circulation and Amenities	4.50	4.06	4.35																		4.30
Safety and Security				4.78	4.67																4.72
Building Envelope						4.33	4.07	4.33													4.24
Building Interiors Environment									4.22	4.45	4.50	4.60	4.48	4.73							4.50
Building Systems															4.38	3.83	3.86	3.80	4.28	4.29	4.07



Condition Assessment - Score Summary

High School	Condition Score
Riley HS	83.93
Adams HS	80.75
Washington HS	78.42
Clay HS	67.88

Middle School	Condition Score
Jefferson MS	81.47
Edison MS	74.82
Navarre MS	72.47
Clay IA	67.32
Jackson MS	66.89
Lasalle MS	65.72
Dickinson MS	65.17

Scoring Rubric
A 100-90
B 80-89
C 70-79
D 60-69
F Below 60

Elementary School	Condition Score
Marquette ES	96.85
Harrison ES	94.95
Lincoln ES	94.74
Nuner ES	91.13
Monroe ES	90.80
Muessel ES	88.91
Wilson ES	87.60
Marshall ES	87.17
Madison ES	85.94
Kennedy ES	83.71
Darden ES	82.83
Swanson ES	80.21
McKinley ES	79.90
Warren ES	79.84
Coquillard ES	73.24

Support Facilities Overview



Support Facilities Overview

South Bend Community School Corporation currently has fourteen support facilities. Six of those buildings are currently closed and are being used for SBCSC Programs. Below is a summary of all support buildings.

Building	Purpose	Condition Score
Bendix	Adult Education	69.03
Brown	Community Center/ Administration Center	61.75
Lafayette	Head Start	68.11
Sample Street Warehouse	Warehouse	43.95
Service	Central Facilities	66.85
Studabaker	YAS (Pre-K, SNAP, Special Needs. Sp. ED.)	68.65
Transportation	Vehicle Maintenance	68.70
Adminstration Building	Selling to City and Relocating	N/A
Perley	Rise-Up	60.28
Closed Facilities		
Eggleston	Closed	72.56
Greene	Closed / Voluntary succession from SBCSC/ Historic SB	74.07
Hamilton	Closed / Potential Charter	78.42
Hay	Hebrew School	77.74
Tarkington	Closed / Potential Charter	78.28
Old Marquette	Closed	N/A

Bendix



Campus Site Size: 1.26 acres
 Building Areas: 16,969 Sq. Ft.
 Number of Floors/Stories: 3
 Classrooms & Computer Labs: 12
 Grade Configuration: Adult Ed. (+18 YOA)
 Student Capacity: 200
 Enrollment: N/A

Date (s) of Construction:
 2003 A/ Occupancy

Support Facilities Conditions Assessments	
A Site Circulation and Amenities	
Car / Bus Drop-off/ Pick-up / Stacking	3.64
Drives, Lots, and Walks	2.20
Fields/ Playgrounds /Site Improvements	3.86
B Safety and Security	
Secure Visitor Access	3.50
Surveillance / Cameras	3.00
C Building Envelope	
Roofs	3.00
Walls	3.67
Windows / Doors	3.50
D Building Interiors Environment	
ADA / Accessibility	3.17
Floors	4.00
Ceilings	3.20
Doors	4.00
Fixed Equipment (Casework/ Lockers /	4.00
Restrooms	3.00
E Building Systems	
Technology	4.00
Electrical	3.33
Lighting	3.75
Temperature Control	3.00
HVAC	3.00
Plumbing Systems / Fixtures	4.22
Total Building Condition	69.03

Brown



Campus Site Size: 13.07 acres
 Building Areas: 163,642 Sq. Ft.
 Number of Floors/Stories: 1+Partial 2nd
 Classrooms: 32
 Grade Configuration: 5-8
 Student Capacity: 928
 Enrollment: 456

 Date (s) of Construction:
 1957 Original Construction/ Occupancy
 1976 Addition for use as a Middle School with Dickinson Bldg. Const. Bond.
 2003 Remodel for use as Intermediate Facility

Support Facilities Conditions Assessments		
A Site Circulation and Amenities		
Car / Bus Drop-off/ Pick-up / Stacking		3.62
Drives, Lots, and Walks		2.50
Fields/ Playgrounds /Site Improvements		3.00
B Safety and Security		
Secure Visitor Access		2.75
Surveillance / Cameras		4.00
C Building Envelope		
Roofs		2.67
Walls		3.20
Windows / Doors		3.00
D Building Interiors Environment		
ADA / Accessibility		3.17
Floors		3.73
Ceilings		3.17
Doors		3.50
Fixed Equipment (Casework/ Lockers / Bleacher		2.53
Restrooms		3.58
E Building Systems		
Technology		1.00
Electrical		4.00
Lighting		3.14
Temperature Control		3.00
HVAC		3.29
Plumbing Systems / Fixtures		2.91
Total Building Condition		61.75

Lafayette



Campus Site Size: 10.7
 Building Areas: 66,497 Sq. Ft.
 Number of Floors/Stories: 1
 Teaching Stations: 27
 Grade Configuration: Preschool (SAMP/Head Start)
 Student Capacity: 460
 Enrollment (2011-2012): 525 Total in Bldg. 387 HS

Date (s) of Construction:
 1957 Original Construction/ Occupancy
 1962 Classrooms Addition
 1992 Cafeteria Addition
 2004 Classroom Addition for Head Start and Cafeteria Remodel

Support Facilities Conditions Assessments	
A Site Circulation and Amenities	
Car / Bus Drop-off/ Pick-up / Stacking	3.09
Drives, Lots, and Walks	2.63
Fields/ Playgrounds /Site Improvements	3.92
B Safety and Security	
Secure Visitor Access	4.00
Surveillance / Cameras	4.00
C Building Envelope	
Roofs	4.00
Walls	4.00
Windows / Doors	3.25
D Building Interiors Environment	
ADA / Accessibility	3.17
Floors	2.79
Ceilings	3.20
Doors	3.67
Fixed Equipment (Casework/ Lockers /	4.00
Restrooms	3.40
E Building Systems	
Technology	3.00
Electrical	3.00
Lighting	3.00
Temperature Control	3.50
HVAC	3.50
Plumbing Systems / Fixtures	3.00
Total Building Condition	68.11

Perley - Rise Up



Campus Site Size: 3.12 acres
 Building Areas: 55,862 Sq. Ft.
 Number of Floors/Stories: 2
 Classrooms: 16
 Grade Configuration: K - 4
 Student Capacity: 392
 Enrollment: 267

Date (s) of Construction:
 1951 Original Construction/ Occupancy
 1961 Classrooms Addition
 1992 Cafeteria and Classrooms Addition

High Schools Conditions Assessments

A Site Circulation and Amenities

Car / Bus Drop-off/ Pick-up / Stacking	3.40
Drives, Lots, and Walks	4.00
Fields/ Playgrounds /Site Improvements	4.92

B Safety and Security

Secure Visitor Access	2.00
Surveillance / Cameras	1.00

C Building Envelope

Roofs	3.00
Walls	3.00
Windows / Doors	2.00

D Building Interiors Environment

ADA / Accessibility	2.80
Floors	3.35
Ceilings	3.00
Doors	2.10
Fixed Equipment (Casework/ Lockers / Bleacher	1.96
Restrooms	3.14

E Building Systems

Technology	4.67
Electrical	2.50
Lighting	3.50
Temperature Control	3.00
HVAC	3.22
Plumbing Systems / Fixtures	3.73

Total Building Condition	60.28
---------------------------------	--------------

Studebaker

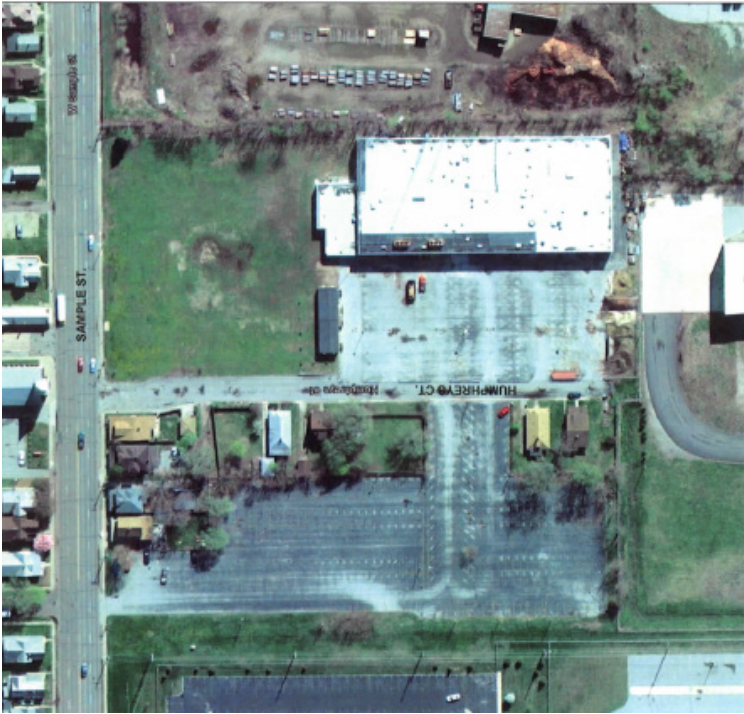


Campus Site Size: 3.00 acres
 Building Areas: 70,064 Sq. Ft.
 Number of Floors/Stories: 1
 Teaching Stations: 26
 Grade Configuration: Early College 9-12: Lifeskills
 Student Capacity: 468
 Enrollment: Early College is included with Riley H.S.

Date (s) of Construction:
 1961 Original Construction/ Occupancy
 1963 Classroom Addition
 1997 Cafeteria Addition

Support Facilities Conditions Assessments	
A Site Circulation and Amenities	
Car / Bus Drop-off/ Pick-up / Stacking	3.31
Drives, Lots, and Walks	3.14
Fields/ Playgrounds /Site Improvements	3.83
B Safety and Security	
Secure Visitor Access	2.71
Surveillance / Cameras	3.67
C Building Envelope	
Roofs	4.00
Walls	4.00
Windows / Doors	2.75
D Building Interiors Environment	
ADA / Accessibility	2.33
Floors	3.23
Ceilings	3.80
Doors	3.50
Fixed Equipment (Casework/ Lockers /	3.67
Restrooms	3.38
E Building Systems	
Technology	3.75
Electrical	3.33
Lighting	3.00
Temperature Control	4.00
HVAC	3.25
Plumbing Systems / Fixtures	4.00
Total Building Condition	68.65

Sample Street Warehouse or Ivy Tech Building



Campus Site Size: 7 .6 acres
 Building Areas: 62,389 Sq. Ft.
 Number of Floors/Stories: 1 + Partial 2nd
 Classrooms: 2
 Grade Configuration: N/A
 Student Capacity: N/A
 Enrollment: N/A

 Date (s) of Construction:
 1961 Original Construction/ Occupancy
 2002 Adjacent Classroom Building Demolition

Support Facilities Conditions Assessments	
A Site Circulation and Amenities	
Car / Bus Drop-off/ Pick-up / Stacking	3.38
Drives, Lots, and Walks	2.00
Fields/ Playgrounds /Site Improvements	3.57
B Safety and Security	
Secure Visitor Access	0.00
Surveillance / Cameras	0.00
C Building Envelope	
Roofs	3.00
Walls	3.00
Windows / Doors	3.33
D Building Interiors Environment	
ADA / Accessibility	2.00
Floors	4.00
Ceilings	3.67
Doors	3.00
Fixed Equipment (Casework/ Lockers / Bleacher	0.00
Restrooms	3.00
E Building Systems	
Technology	2.00
Electrical	2.00
Lighting	2.00
Temperature Control	0.00
HVAC	2.00
Plumbing Systems / Fixtures	2.00
Total Building Condition	43.95

Transportation Building



Campus Site Size: 18.78 acres
 Building Areas: 21,700 Sq. Ft.
 Number of Floors/Stories: 2
 Classrooms: N/A
 Grade Configuration: N/A
 Student Capacity: N/A
 Enrollment: N/A

Date (s) of Construction:
 1984 Original Construction/ Occupancy Bus
 1987 Parking Lot Expansion
 1999 Bus and Driver Parking Lot Expansion

Support Facilities Conditions Assessments	
Car / Bus Drop-off/ Pick-up / Stacking	2.93
Drives, Lots, and Walks	2.60
Fields/ Playgrounds /Site Improvements	3.78
B Safety and Security	
Secure Visitor Access	1.80
Surveillance / Cameras	3.00
C Building Envelope	
Roofs	4.00
Walls	4.00
Windows / Doors	3.50
D Building Interiors Environment	
ADA / Accessibility	3.17
Floors	3.13
Ceilings	3.00
Doors	3.00
Fixed Equipment (Casework/ Lockers /	3.00
Restrooms	2.80
E Building Systems	
Technology	5.00
Electrical	4.00
Lighting	4.00
Temperature Control	4.00
HVAC	4.00
Plumbing Systems / Fixtures	4.00
Total Building Condition	68.70

Service Building



Campus Site Size: 1.68 acres
 Building Areas: 27,500 Sq. Ft. Number of
 Floors/Stories: 3
 Classrooms: N/A
 Student Capacity: N/A
 Grade Configuration: Maintenance

Date (s) of Construction:
 1956 Original Construction/ Occupancy
 2008 Roof Replacement

Support Facilities Conditions Assessments		
A Site Circulation and Amenities		
	Car / Bus Drop-off/ Pick-up / Stacking	3.33
	Drives, Lots, and Walks	3.13
	Fields/ Playgrounds /Site Improvements	4.00
B Safety and Security		
	Secure Visitor Access	3.17
	Surveillance / Cameras	4.00
C Building Envelope		
	Roofs	3.00
	Walls	4.00
	Windows / Doors	3.67
D Building Interiors Environment		
	ADA / Accessibility	2.67
	Floors	3.25
	Ceilings	4.00
	Doors	3.67
	Fixed Equipment (Casework/ Lockers / Bleacher	3.75
	Restrooms	3.22
E Building Systems		
	Technology	3.00
	Electrical	3.00
	Lighting	3.00
	Temperature Control	3.00
	HVAC	3.00
	Plumbing Systems / Fixtures	3.00
Total Building Condition		66.85

Closed School Buildings



Eggleston - Rise-Up



Campus Site Size: 20.00 acres
 Building Areas: 68,000 Sq. Ft.
 Number of Floors/Stories: 1
 Classrooms: 28
 Grade Configuration: 9-12
 Student Capacity: 864/691
 Enrollment : 223

Date (s) of Construction:
 1965 Original Construction/ Occupancy
 1970 Classrooms Addition
 1992 Cafeteria Addition

Closed Schools Conditions Assessments		
A Site Circulation and Amenities		
Car / Bus Drop-off/ Pick-up / Stacking		4.73
Drives, Lots, and Walks		2.50
Fields/ Playgrounds /Site Improvements		3.46
B Safety and Security		
Secure Visitor Access		3.50
Surveillance / Cameras		4.75
C Building Envelope		
Roofs		4.00
Walls		3.00
Windows / Doors		4.00
D Building Interiors Environment		
ADA / Accessibility		2.83
Floors		3.75
Ceilings		5.00
Doors		4.67
Fixed Equipment (Casework/ Lockers / Bleacher		3.60
Restrooms		4.14
E Building Systems		
Technology		3.00
Electrical		3.25
Lighting		3.00
Temperature Control		3.00
HVAC		3.00
Plumbing Systems / Fixtures		3.38
Total Building Condition		72.56

Greene



Campus Site Size: 16.00 acres
 Building Areas: 103,458 Sq. Ft.
 Number of Floors/Stories: 1
 Classrooms: 25
 Grade Configuration: 5-8
 Student Capacity: 714
 Enrollment : 345

Date (s) of Construction:
 1928 Original Construction/ Occupancy
 1941 Classroom Addition
 1951 Classroom Addition
 1955 Gym and Classrooms
 1980 Classroom Addition
 2003 Remodel for intermediate facility

Closed Schools Conditions Assessments		
A Site Circulation and Amenities		
	Car / Bus Drop-off/ Pick-up / Stacking	4.33
	Drives, Lots, and Walks	2.33
	Fields/ Playgrounds /Site Improvements	3.60
B Safety and Security		
	Secure Visitor Access	3.00
	Surveillance / Cameras	5.00
C Building Envelope		
	Roofs	4.00
	Walls	4.00
	Windows / Doors	4.75
D Building Interiors Environment		
	ADA / Accessibility	3.83
	Floors	4.00
	Ceilings	2.83
	Doors	5.00
	Fixed Equipment (Casework/ Lockers / Bleacher	4.39
	Restrooms	5.00
E Building Systems		
	Technology	3.00
	Electrical	3.00
	Lighting	3.00
	Temperature Control	3.00
	HVAC	3.00
	Plumbing Systems / Fixtures	3.00
Total Building Condition		74.07

Hamilton



Campus Site Size: 17.0
 Building Areas: 71,510 Sq. Ft.
 Number of Floors/Stories: 2
 Classrooms: 18
 Grade Configuration: K-4
 Student Capacity: 444
 Enrollment: 325

Date (s) of Construction:
 1965 Original Construction/ Occupancy

Closed Schools Conditions Assessments		
A Site Circulation and Amenities		
Car / Bus Drop-off/ Pick-up / Stacking		4.67
Drives, Lots, and Walks		1.71
Fields/ Playgrounds /Site Improvements		3.57
B Safety and Security		
Secure Visitor Access		5.00
Surveillance / Cameras		5.00
C Building Envelope		
Roofs		5.00
Walls		4.00
Windows / Doors		3.25
D Building Interiors Environment		
ADA / Accessibility		4.33
Floors		4.63
Ceilings		5.00
Doors		4.67
Fixed Equipment (Casework/ Lockers / Bleacher		4.58
Restrooms		5.00
E Building Systems		
Technology		3.00
Electrical		3.00
Lighting		3.00
Temperature Control		3.00
HVAC		3.00
Plumbing Systems / Fixtures		3.00
Total Building Condition		78.42

Hay



Campus Site Size: 15,000 acres
 Building Areas: 78,993 Sq. Ft.
 Number of Floors/Stories: 1 1/2
 Grade Configuration: K-4
 Student Capacity: 754
 Enrollment: 508

Date (s) of Construction:
 1954 Original Construction/ Occupancy
 1970's 2 story Classroom Addition
 1993 Cafeteria Addition

Closed Schools Conditions Assessments		
A Site Circulation and Amenities		
Car / Bus Drop-off/ Pick-up / Stacking		4.25
Drives, Lots, and Walks		3.80
Fields/ Playgrounds /Site Improvements		4.15
B Safety and Security		
Secure Visitor Access		5.00
Surveillance / Cameras		2.67
C Building Envelope		
Roofs		4.00
Walls		4.00
Windows / Doors		3.75
D Building Interiors Environment		
ADA / Accessibility		4.33
Floors		3.75
Ceilings		4.80
Doors		3.00
Fixed Equipment (Casework/ Lockers / Bleacher		4.18
Restrooms		4.71
E Building Systems		
Technology		3.00
Electrical		3.25
Lighting		3.50
Temperature Control		4.00
HVAC		3.78
Plumbing Systems / Fixtures		3.82
Total Building Condition		77.74

Tarkington



Campus Site Size: 14.0 acres
 Building Areas: 46,733 Sq. Ft.
 Number of Floors/Stories: 1 Story
 Classrooms: 17
 Grade Configuration: K-4
 Student Capacity: 414
 Enrollment: 303

Date (s) of Construction:
 1960 Original Construction/ Occupancy
 1992 Cafeteria Addition

Closed Schools Conditions Assessments		
A Site Circulation and Amenities		
	Car / Bus Drop-off/ Pick-up / Stacking	4.60
	Drives, Lots, and Walks	4.14
	Fields/ Playgrounds /Site Improvements	3.67
B Safety and Security		
	Secure Visitor Access	5.00
	Surveillance / Cameras	5.00
C Building Envelope		
	Roofs	4.00
	Walls	4.00
	Windows / Doors	5.00
D Building Interiors Environment		
	ADA / Accessibility	3.33
	Floors	4.38
	Ceilings	4.80
	Doors	5.00
	Fixed Equipment (Casework/ Lockers / Bleacher	3.22
	Restrooms	4.14
E Building Systems		
	Technology	3.00
	Electrical	3.00
	Lighting	3.00
	Temperature Control	3.00
	HVAC	3.00
	Plumbing Systems / Fixtures	3.00
Total Building Condition		78.28

Detail School Overview



Adams High School



Campus Site Size: 15.99 acres
Number of Floors/Stories: 2
Student Capacity: 1,950
Teaching Stations: 86

Building Areas: 393,851 Sq. Ft.
Grade Configuration: 9-12
Enrollment : 1,922

Date (s) of Construction: 1940 Original Construction/ Occupancy
1956 Classrooms Addition
1966 Classrooms & Athletics Addition
1977 Classrooms Addition
2000-03 Additions and Complete Renovation

High Schools Conditions Assessments		
A Site Circulation and Amenities		
Car / Bus Drop-off/ Pick-up / Stacking		4.64
Drives, Lots, and Walks		4.80
Fields/ Playgrounds /Site Improvements		4.75
B Safety and Security		
Secure Visitor Access		2.50
Surveillance / Cameras		5.00
C Building Envelope		
Roofs		4.00
Walls		2.00
Windows / Doors		3.90
D Building Interiors Environment		
ADA / Accessibility		3.80
Floors		3.37
Ceilings		3.57
Doors		3.90
Fixed Equipment (Casework/ Lockers / Bleacher		3.26
Restrooms		3.86
E Building Systems		
Technology		4.13
Electrical		4.50
Lighting		4.17
Temperature Control		5.00
HVAC		4.78
Plumbing Systems / Fixtures		4.83
Total Building Condition		80.75

Educational Adequacy Summary	Function	Mechanical / Electrical / Plumbing	Technology	Safety / Security	Comfort & Health	Equipment	Total
Classrooms	4.17	2.36	3.29	1.69	4.23	4.81	20.56
Science	2.88	2.17	3.28	2.91	3.98	4.25	19.47
Special Education	3.95	2.40	2.97	1.61	4.67	2.27	17.85
Career Tech	2.45	2.24	2.61	3.45	4.55	5.00	20.31
Physical Education	2.98	3.25	2.41	2.78	2.50	4.33	18.24
Arts	3.25	2.68	3.40	2.00	5.00	4.71	21.04
AVERAGE	3.28	2.48	2.99	2.41	4.16	4.23	19.54

Clay High School



Campus Site Size: 43.00 acres
 Number of Floors/Stories: 2
 Student Capacity: 1,500
 Teaching Stations: 69

Building Areas: 282,489 Sq. Ft
 Grade Configuration: 9-12
 Enrollment: 789

Date (s) of Construction: 1976 Original Construction/ Occupancy
 1991 Athletics Addition
 1991 Science Labs Addition & Renovation
 2010 Limited Renovations for Fine Arts Magnet

High Schools Conditions Assessments

A Site Circulation and Amenities

Car / Bus Drop-off/ Pick-up / Stacking	4.63
Drives, Lots, and Walks	4.75
Fields/ Playgrounds /Site Improvements	4.50

B Safety and Security

Secure Visitor Access	2.33
Surveillance / Cameras	3.00

C Building Envelope

Roofs	3.00
Walls	4.00
Windows / Doors	2.50

D Building Interiors Environment

ADA / Accessibility	2.60
Floors	3.35
Ceilings	1.03
Doors	2.90
Fixed Equipment (Casework/ Lockers / Bleacher	3.11
Restrooms	3.67

E Building Systems

Technology	4.83
Electrical	4.75
Lighting	4.00
Temperature Control	2.00
HVAC	3.11
Plumbing Systems / Fixtures	3.82

Total Building Condition 67.88

Educational Adequacy Summary	Function	Mechanical / Electrical / Plumbing	Technology	Safety / Security	Comfort & Health	Equipment	Total
Classrooms	4.98	1.06	3.41	2.37	3.27	5.00	20.10
Science	3.72	3.18	3.54	4.39	4.44	5.00	24.28
Special Education	5.00	1.51	3.75	3.21	3.00	2.50	18.97
Career Tech	2.92	2.49	3.13	3.86	1.96	4.64	18.99
Physical Education	3.64	2.70	2.14	3.57	2.41	3.51	17.98
Arts	3.19	1.33	4.10	3.22	2.78	3.93	18.54
AVERAGE	3.91	2.19	3.35	3.44	2.98	4.10	19.95

Riley High School



Campus Site Size: 19.25 acres
 Building Areas: 348,064 Sq. Ft.
 Number of Floors/Stories: 4
 Grade Configuration: 9-12
 Student Capacity: 2,000
 Enrollment: 1,033
 Teaching Stations: 95
 Date (s) of Construction: 2000 Original
 Construction/ Occupancy

High Schools Conditions Assessments

A Site Circulation and Amenities

Car / Bus Drop-off/ Pick-up / Stacking	4.40
Drives, Lots, and Walks	4.00
Fields/ Playgrounds /Site Improvements	4.47

B Safety and Security

Secure Visitor Access	2.50
Surveillance / Cameras	5.00

C Building Envelope

Roofs	4.00
Walls	4.00
Windows / Doors	4.00

D Building Interiors Environment

ADA / Accessibility	4.40
Floors	3.94
Ceilings	4.00
Doors	4.00
Fixed Equipment (Casework/ Lockers / Bleacher	4.14
Restrooms	4.50

E Building Systems

Technology	4.33
Electrical	4.25
Lighting	4.33
Temperature Control	4.00
HVAC	4.67
Plumbing Systems / Fixtures	5.00

Total Building Condition 83.93

Educational Adequacy Summary	Function	Mechanical / Electrical / Plumbing	Technology	Safety / Security	Comfort & Health	Equipment	Total
Classrooms	4.82	1.77	3.06	1.80	3.78	4.73	19.96
Science	3.50	2.72	3.20	3.06	2.50	5.00	19.99
Special Education	4.14	1.65	3.00	2.50	2.50	3.13	16.91
Career Tech	2.98	1.48	3.06	3.10	2.44	4.79	17.86
Physical Education	3.30	2.94	1.57	2.80	2.67	3.50	16.78
Arts	2.88	2.44	3.03	2.39	2.61	3.27	16.64
AVERAGE	3.60	2.11	2.82	2.61	2.75	4.07	17.97

Washington High School



Campus Site Size: 34.31 acres
 Number of Floors/Stories: 1
 Student Capacity: 1,400
 Classrooms: 72

Building Areas: 261,923 Sq. Ft.
 Grade Configuration: 9-12
 Enrollment: 804

Date (s) of Construction: 1960 Original Construction/ Occupancy
 1962-2007 Multiple additions/renovations and upgrades.
 1991 Auxiliary gym addition
 2005 Multiple additions/renovations and upgrades.
 2007 Main office and Media Center remodel

High Schools Conditions Assessments

A Site Circulation and Amenities

Car / Bus Drop-off/ Pick-up / Stacking	4.80
Drives, Lots, and Walks	3.83
Fields/ Playgrounds /Site Improvements	4.38

B Safety and Security

Secure Visitor Access	5.00
Surveillance / Cameras	5.00

C Building Envelope

Roofs	4.00
Walls	4.00
Windows / Doors	3.15

D Building Interiors Environment

ADA / Accessibility	3.20
Floors	3.34
Ceilings	2.82
Doors	4.00
Fixed Equipment (Casework/ Lockers / Bleacher	3.14
Restrooms	4.00

E Building Systems

Technology	4.57
Electrical	4.50
Lighting	3.67
Temperature Control	3.00
HVAC	4.11
Plumbing Systems / Fixtures	3.92

Total Building Condition 78.42

Educational Adequacy Summary	Function	Mechanical / Electrical / Plumbing	Technology	Safety / Security	Comfort & Health	Equipment	Total
Classrooms	4.11	2.52	3.42	1.90	3.57	4.62	20.15
Science	3.30	2.67	3.19	2.70	5.00	5.00	21.86
Special Education	1.92	1.19	3.23	1.31	4.17	2.50	14.31
Career Tech	3.18	2.38	3.00	4.10	4.75	4.75	22.15
Physical Education	3.33	2.16	2.36	3.17	2.15	2.43	15.60
Arts	2.89	2.05	3.13	2.78	3.65	3.27	17.76
AVERAGE	3.12	2.18	3.05	2.66	3.88	3.76	18.66

Dickinson Middle School



Campus Site Size: 21.00 acres
 Number of Floors/Stories: 2
 Student Capacity: 780
 Classrooms: 28

Building Area: 147,797 Sq. Ft.
 Grade Configuration: 5 - 8
 Enrollment : 541

Date (s) of Construction: 1976 Original Construction/ Occupancy

Middle Schools Conditions Assessments

A Site Circulation and Amenities

Car / Bus Drop-off/ Pick-up / Stacking	4.75
Drives, Lots, and Walks	3.80
Fields/ Playgrounds /Site Improvements	4.32

B Safety and Security

Secure Visitor Access	2.33
Surveillance / Cameras	2.00

C Building Envelope

Roofs	2.00
Walls	3.00
Windows / Doors	2.00

D Building Interiors Environment

ADA / Accessibility	3.00
Floors	3.28
Ceilings	3.17
Doors	3.00
Fixed Equipment (Casework/ Lockers / Bleacher	2.53
Restrooms	3.57

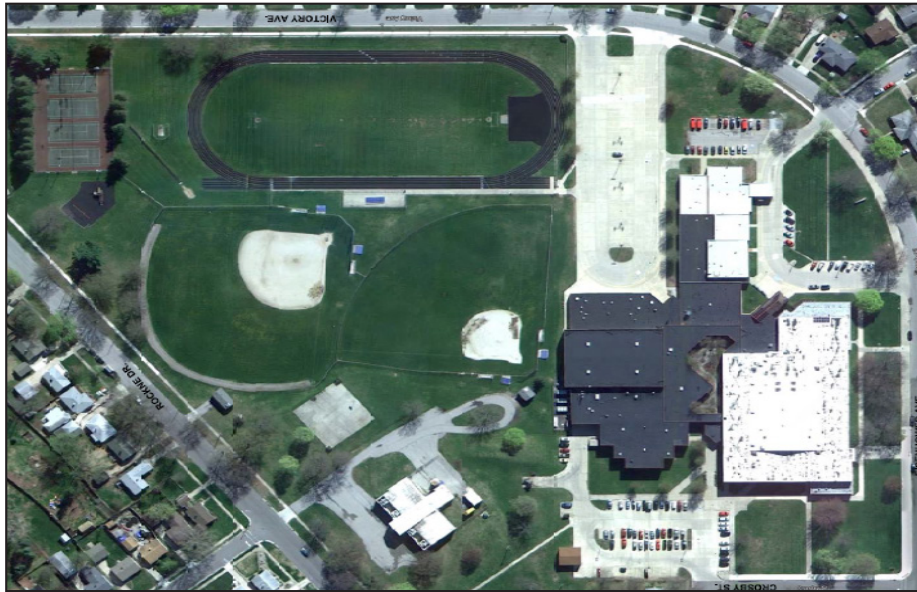
E Building Systems

Technology	4.43
Electrical	3.25
Lighting	4.25
Temperature Control	3.00
HVAC	3.67
Plumbing Systems / Fixtures	3.83

Total Building Condition	65.17
---------------------------------	--------------

Summary	Function	Mechanical / Electrical / Plumbing	Technology	Safety / Security	Comfort & Health	Equipment	Total
Classrooms	3.34	1.91	3.23	1.97	3.28	4.83	18.56
Science	2.92	1.83	3.13	3.00	2.67	5.00	18.54
Special Education	4.38	1.25	3.44	2.00	0.80	5.00	16.86
Career Tech	3.57	1.53	2.50	3.00	1.25	4.17	16.02
Physical Education	2.55	2.92	2.33	2.50	1.67	5.00	16.97
Arts	2.22	0.97	3.19	0.96	2.45	2.45	12.23
AVERAGE	3.16	1.89	2.97	2.24	2.02	4.41	16.68

Edison Middle School



Campus Site Size: 20.12 acres
 Number of Floors/Stories: 1+ Partial 2nd
 Student Capacity: 650
 Classrooms: 41

Building Areas: 185,180 Sq.Ft.
 Grade Configuration: 5 - 8
 Enrollment: 397

Date (s) of Construction: 1955 Original Construction/ Occupancy
 1981 Addition and Renovation for a Special Education (Unit 'C')
 1992 Remodel to facilitate Middle School 7th - 8th Grades

Middle Schools Conditions Assessments

A Site Circulation and Amenities

Car / Bus Drop-off/ Pick-up / Stacking	4.47
Drives, Lots, and Walks	1.33
Fields/ Playgrounds /Site Improvements	4.38

B Safety and Security

Secure Visitor Access	5.00
Surveillance / Cameras	4.00

C Building Envelope

Roofs	3.00
Walls	5.00
Windows / Doors	4.80

D Building Interiors Environment

ADA / Accessibility	2.67
Floors	3.62
Ceilings	3.62
Doors	3.00
Fixed Equipment (Casework/ Lockers / Bleacher	2.52
Restrooms	3.33

E Building Systems

Technology	4.83
Electrical	4.00
Lighting	3.83
Temperature Control	3.00
HVAC	4.00
Plumbing Systems / Fixtures	4.42

Total Building Condition	74.82
---------------------------------	--------------

Summary	Function	Mechanical / Electrical / Plumbing	Technology	Safety / Security	Comfort & Health	Equipment	Total
Classrooms	4.47	2.63	2.69	1.15	4.49	4.70	20.12
Science	3.50	2.68	3.75	3.25	5.00	5.00	23.18
Special Education	2.08	1.04	2.50	1.40	4.00	5.00	16.03
Career Tech	2.33	1.00	3.00	1.60	3.13	3.50	14.56
Physical Education	4.11	2.85	2.67	3.33	1.25	5.00	19.20
Arts	3.75	0.83	3.25	1.83	4.20	2.30	16.16
AVERAGE	3.37	2.04	2.98	2.09	3.68	4.25	18.41

Jackson Middle School



Campus Site Size: 49.73 acres Incl. athletic fields
 Building Areas: 165,000 Sq. Ft.
 Grade Configuration: 5-8
 Enrollment: 543
 Classrooms: 34

Number of Floors/Stories: 2
 Student Capacity: 790

Date (s) of Construction: 1965 Original Construction/ Occupancy

Middle Schools Conditions Assessments

A Site Circulation and Amenities

Car / Bus Drop-off/ Pick-up / Stacking	4.73
Drives, Lots, and Walks	4.29
Fields/ Playgrounds /Site Improvements	4.05

B Safety and Security

Secure Visitor Access	2.60
Surveillance / Cameras	2.00

C Building Envelope

Roofs	2.00
Walls	2.50
Windows / Doors	2.30

D Building Interiors Environment

ADA / Accessibility	3.17
Floors	2.98
Ceilings	3.33
Doors	3.10
Fixed Equipment (Casework/ Lockers / Bleacher	2.53
Restrooms	3.75

E Building Systems

Technology	4.13
Electrical	3.75
Lighting	3.83
Temperature Control	4.00
HVAC	4.22
Plumbing Systems / Fixtures	3.64

Total Building Condition	66.89
---------------------------------	--------------

Summary	Function	Mechanical / Electrical	Technology	Safety / Security	Comfort & Health	Equipment	Total
Classrooms	2.59		3.06	1.09	3.68	4.29	16.13
Science	2.29		2.71	2.00	1.67	4.90	14.97
Special Education	2.86		4.38	3.00	0.63	5.00	16.41
Career Tech	2.50		3.13	3.00	3.13	5.00	18.92
Physical Education	3.44		1.50	3.75	2.50	5.00	17.23
Arts	3.83		2.50	1.46	2.50	4.00	15.57
AVERAGE	2.92		2.88	2.38	2.35	4.70	16.54

Jefferson Middle School



Campus Site Size: 15.03 acres including shared game fields
 Building Areas: 108,490 Sq. Ft. Number of Floors/Stories: 2
 Grade Configuration: 5-8 Student Capacity: 621
 Enrollment: 507 Classrooms: 27
 Date (s) of Construction: 1931 Original Construction/ Occupancy
 1936-52 Various classroom and Cafeteria additions
 2003-04 Additions and renovation for Middle School

Middle Schools Conditions Assessments		
A Site Circulation and Amenities		
Car / Bus Drop-off/ Pick-up / Stacking		4.73
Drives, Lots, and Walks		4.67
Fields/ Playgrounds /Site Improvements		4.88
B Safety and Security		
Secure Visitor Access		5.00
Surveillance / Cameras		3.00
C Building Envelope		
Roofs		4.00
Walls		4.00
Windows / Doors		3.93
D Building Interiors Environment		
ADA / Accessibility		3.00
Floors		2.80
Ceilings		4.50
Doors		3.10
Fixed Equipment (Casework/ Lockers / Bleacher		3.98
Restrooms		3.56
E Building Systems		
Technology		4.50
Electrical		4.25
Lighting		4.00
Temperature Control		4.00
HVAC		4.67
Plumbing Systems / Fixtures		4.92
Total Building Condition		81.47

Summary	Function	Mechanical / Electrical	Technology	Safety / Security	Comfort & Health	Equipment	Total
Classrooms	4.40		3.23		4.53	4.53	21.32
Science	4.00		3.13		5.00	3.75	21.72
Special Education	2.64		3.13		3.67	4.38	17.02
Career Tech	4.40		2.92		5.00	2.29	20.40
Physical Education	4.58		3.00		1.88	5.00	19.56
Arts	2.44		3.00		4.20	3.90	17.44
AVERAGE	3.74		3.07		4.04	3.97	19.64

LaSalle Middle School



Campus Site Size: 27.60 acres
 Number of Floors/Stories: 1 + Partial 2nd Floor
 Grade Configuration: 5-8
 Enrollment: 460
 Classrooms: 42

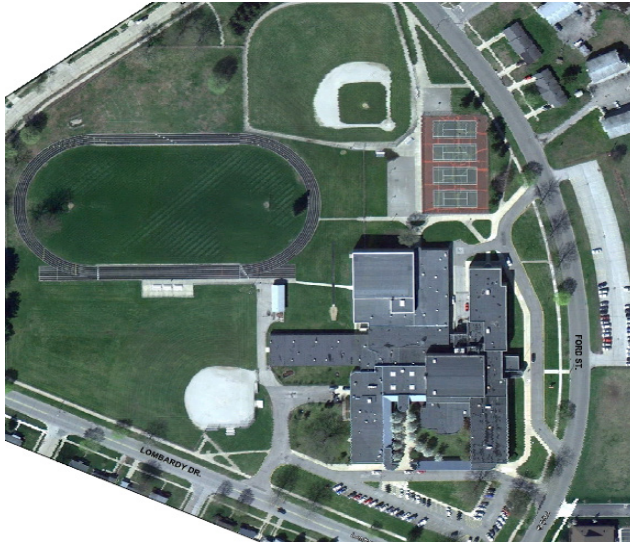
Building Areas: 264,013 Sq. Ft.
 Student Capacity: 1,216

Date (s) of Construction: 1965 Original Construction/ Occupancy
 1972 Classrooms and Media Center Addition
 1992 Auxiliary Gym Addition
 2003 Plan Z Remodel

Middle Schools Conditions Assessments		
A Site Circulation and Amenities		
Car / Bus Drop-off/ Pick-up / Stacking		4.80
Drives, Lots, and Walks		2.80
Fields/ Playgrounds /Site Improvements		4.30
B Safety and Security		
Secure Visitor Access		2.60
Surveillance / Cameras		3.00
C Building Envelope		
Roofs		2.00
Walls		2.33
Windows / Doors		2.30
D Building Interiors Environment		
ADA / Accessibility		3.17
Floors		2.73
Ceilings		4.00
Doors		2.40
Fixed Equipment (Casework/ Lockers / Bleacher		3.23
Restrooms		4.13
E Building Systems		
Technology		4.50
Electrical		3.25
Lighting		3.83
Temperature Control		3.00
HVAC		3.44
Plumbing Systems / Fixtures		3.90
Total Building Condition		65.72

Summary	Function	Mechanical / Electrical / Plumbing	Technology	Safety / Security	Comfort & Health	Equipment	Total
Classrooms	2.97	2.36	3.97	4.21	4.22	4.89	22.63
Science	4.08	2.78	4.50	4.08	5.00	3.75	24.19
Special Education	2.50	3.46	3.13	4.50	5.00	4.06	22.65
Career Tech	4.75	2.87	2.97	3.00	3.42	4.58	21.59
Physical Education	4.44	3.33	3.67	4.38	2.92	5.00	23.74
Arts	3.12	1.37	2.50	2.75	3.40	4.13	17.26
AVERAGE	3.65	2.70	3.45	3.82	3.99	4.40	22.01

Navarre Middle School



Campus Site Size: 19.22 acres

Number of Floors/Stories: 2

Student Capacity: 680

Classrooms: 2

Date (s) of Construction: 1953 Original Construction/ Occupancy

1959 Addition - South Corridor

1981 Remodel from K-8 to Middle School

1987 Phase II renovations/additions 1988 Phase III design

1989 Phase III-A 1 Renovation upgrade for Middle School Program

1991 Phase III-B 1 Remodeling

Building Areas: 140,685 Sq. Ft.

Grade Configuration: 5-8

Enrollment: 579

Middle Schools Conditions Assessments

A Site Circulation and Amenities

Car / Bus Drop-off/ Pick-up / Stacking	4.56
Drives, Lots, and Walks	3.50
Fields/ Playgrounds /Site Improvements	4.00

B Safety and Security

Secure Visitor Access	4.17
Surveillance / Cameras	2.00

C Building Envelope

Roofs	3.00
Walls	4.00
Windows / Doors	4.00

D Building Interiors Environment

ADA / Accessibility	3.17
Floors	4.19
Ceilings	3.83
Doors	3.00
Fixed Equipment (Casework/ Lockers / Bleacher	2.78
Restrooms	3.78

E Building Systems

Technology	4.67
Electrical	4.33
Lighting	4.00
Temperature Control	3.00
HVAC	3.13
Plumbing Systems / Fixtures	3.36

Total Building Condition

72.47

Summary	Function	Mechanical / Electrical / Plumbing	Technology	Safety / Security	Comfort & Health	Equipment	Total
Classrooms	4.35	2.47	3.27	2.34	4.35	4.70	21.48
Science	4.33	2.34	3.13	3.50	4.00	4.70	22.00
Special Education	3.00	1.67	2.81	3.25	3.00	4.58	18.31
Career and Technical	3.75	1.00	3.13	3.50	2.00	4.17	17.54
Physical Education	3.33	1.42	2.67	2.92	2.29	5.00	17.63
Arts	3.20	1.58	3.13	1.46	3.85	4.75	17.97
AVERAGE	3.66	1.75	3.02	2.83	3.25	4.65	19.16

Clay Intermediate School



Campus Site Size: 30.07 acres
 Number of Floors/Stories: 1+Partial 2nd
 Student Capacity: 580
 Classrooms: 32

Building Areas: 151,141 Sq. Ft.
 Grade Configuration: 5-8
 Enrollment: 491

Date (s) of Construction: 1952 Original Construction/ Occupancy
 1972 Classrooms, Media Center and Cafeteria Addition
 Multiple years Space Remodeling
 1993 Partitioned Open-classrooms

Middle Schools Conditions Assessments

A Site Circulation and Amenities

Car / Bus Drop-off/ Pick-up / Stacking	4.73
Drives, Lots, and Walks	2.80
Fields/ Playgrounds /Site Improvements	4.45

B Safety and Security

Secure Visitor Access	5.00
Surveillance / Cameras	2.00

C Building Envelope

Roofs	2.50
Walls	3.00
Windows / Doors	3.00

D Building Interiors Environment

ADA / Accessibility	3.60
Floors	3.66
Ceilings	3.50
Doors	3.00
Fixed Equipment (Casework/ Lockers / Bleacher	2.67
Restrooms	3.27

E Building Systems

Technology	4.50
Electrical	2.50
Lighting	4.17
Temperature Control	3.00
HVAC	2.33
Plumbing Systems / Fixtures	3.64

Total Building Condition 67.32

Summary	Function	Mechanical / Electrical / Plumbing	Technology	Safety / Security	Comfort & Health	Equipment	Total
Classrooms	4.93	1.09	3.21	2.11	4.46	4.98	20.78
Science	4.00	1.49	2.67	3.67	4.17	5.00	20.99
Career Tech	3.00	0.42	2.50	2.00	1.00	3.33	12.25
Physical Education	5.00	2.76	2.54	2.81	2.40	5.00	20.51
Arts	2.71	0.68	3.25	1.00	3.30	3.00	13.94
AVERAGE	3.93	1.29	2.83	2.32	3.07	4.26	17.69

Coquillard Elementary School



Campus Site Size: 19.33
 Number of Floors/Stories: 1
 Student Capacity: 439
 Classrooms: 2
 Date (s) of Construction: 1957 Original Construction/ Occupancy
 1965 Classrooms Addition

Building Areas: 73,806 Sq. Ft.
 Grade Configuration: K-4
 Enrollment: 302

Elementary Schools Conditions Assessments 1 of 2

Car / Bus Drop-off/ Pick-up / Stacking	2.92
Drives, Lots, and Walks	2.33
Fields/ Playgrounds /Site Improvements	3.17
Secure Visitor Access	4.88
Surveillance / Cameras	4.00
Roofs	5.00
Walls	4.50
Windows / Doors	4.75
ADA / Accessibility	4.00
Floors	4.75
Ceilings	5.00
Doors	2.07
Fixed Equipment (Casework/ Lockers / Bleacher	4.48
Restrooms	4.00
Technology	3.00
Electrical	2.50
Lighting	2.00
Temperature Control	3.00
HVAC	3.44
Plumbing Systems / Fixtures	3.45
Total Building Condition	73.24

Summary	Function	Mechanical / Electrical / Plumbing	Technology	Safety / Security	Comfort & Health	Equipment	Total
Classrooms	3.71	3.39	4.27	1.00	2.75	4.08	19.20
Special Education	3.00	3.06	3.00	0.83	3.00	5.00	17.89
Art / Technology	3.25	1.82	2.75	1.25	2.50	2.50	14.07
Physical Education	3.21	4.06	0.63	2.00	1.00	2.50	13.40
Media Center	3.50	4.06	2.50	1.43	1.67	2.50	15.66
AVERAGE	3.33	3.28	2.63	1.30	2.18	3.32	16.04

Darden Elementary School



Campus Site Size: 30.00 acres
 Number of Floors/Stories: 1
 Preschool
 Student Capacity: 762
 Classrooms: 38

Building Areas: 107,993 Sq. Ft.
 Grade Configuration: K-4 +

Enrollment : 518

Date (s) of Construction: 1962 Original Construction/ Occupancy
 1963 Classroom Addition

Elementary Schools Conditions Assessments

Car / Bus Drop-off/ Pick-up / Stacking	4.86
Drives, Lots, and Walks	4.00
Fields/ Playgrounds /Site Improvements	4.77
Secure Visitor Access	5.00
Surveillance / Cameras	4.67
Roofs	4.00
Walls	4.00
Windows / Doors	4.85
ADA / Accessibility	4.33
Floors	4.15
Ceilings	3.20
Doors	4.00
Fixed Equipment (Casework/ Lockers / Bleacher	4.86
Restrooms	5.00
Technology	4.17
Electrical	3.25
Lighting	3.80
Temperature Control	3.00
HVAC	3.75
Plumbing Systems / Fixtures	3.18
Total Building Condition	82.83

Summary	Function	Mechanical / Electrical / Plumbing	Technology	Safety / Security	Comfort & Health	Equipment	Total
Classrooms	3.84	2.96	4.48	1.17	3.95	4.12	20.52
Special Education	2.33	2.20	4.06	1.00	3.89	3.75	17.23
Art / Technology	3.67	2.05	3.33	0.71	3.33	3.06	16.15
Physical Education	3.21	2.50	0.00	3.00	2.00	5.00	15.71
Media Center	4.00	3.06	3.00	0.42	3.00	3.00	16.47
AVERAGE	3.41	2.55	2.98	1.26	3.23	3.78	17.22

Harrison Elementary School



Campus Site Size: 17.23 acres
 Number of Floors/Stories: 2
 Student Capacity: 634
 Classrooms: 39

Building Areas: 120,263 Sq. Ft.
 Grade Configuration: K-4
 Enrollment: 567

Date (s) of Construction: 2001 New Building/ Occupancy

Elementary Schools Conditions Assessments

Car / Bus Drop-off/ Pick-up / Stacking	5.00
Drives, Lots, and Walks	4.83
Fields/ Playgrounds /Site Improvements	4.77
Secure Visitor Access	5.00
Surveillance / Cameras	5.00
Roofs	5.00
Walls	4.00
Windows / Doors	4.50
ADA / Accessibility	4.33
Floors	4.69
Ceilings	4.50
Doors	5.00
Fixed Equipment (Casework/ Lockers / Bleacher	4.26
Restrooms	5.00
Technology	4.83
Electrical	5.00
Lighting	4.40
Temperature Control	5.00
HVAC	5.00
Plumbing Systems / Fixtures	4.83
Total Building Condition	94.95

Summary	Function	Mechanical / Electrical / Plumbing	Technology	Safety / Security	Comfort & Health	Equipment	Total
Classrooms	5.00	4.07	4.25	2.15	4.44	4.44	28.80
Special Education	2.50	1.75	4.38	1.50	5.00	5.00	25.13
Art / Technology	4.33	2.50	3.00	1.67	3.26	3.26	21.29
Physical Education	4.64	1.82	0.00	3.00	3.50	2.50	17.96
Media Center	5.00	4.06	4.00	2.50	4.00	2.50	24.56
AVERAGE	4.30	2.84	3.13	2.16	4.04	3.54	20.01

Kennedy Elementary School



Campus Site Size: 8.0 acres

Number of Floors/Stories: 2

Student Capacity: 521

Classrooms: 35

Date (s) of Construction: 1972 Original Construction/ Occupancy

1992 Cafeteria and Kitchen Addition

2003 Remodel for P.C. Academy

Building Areas: 85,829 Sq. Ft.

Grade Configuration: K-4

Enrollment: 570

Elementary Schools Conditions Assessments

Car / Bus Drop-off/ Pick-up / Stacking	5.00
Drives, Lots, and Walks	4.00
Fields/ Playgrounds /Site Improvements	5.00
Secure Visitor Access	5.00
Surveillance / Cameras	4.75
Roofs	5.00
Walls	3.00
Windows / Doors	3.00
ADA / Accessibility	4.33
Floors	4.56
Ceilings	5.00
Doors	5.00
Fixed Equipment (Casework/ Lockers / Bleacher	4.90
Restrooms	3.67
Technology	4.80
Electrical	3.00
Lighting	3.40
Temperature Control	3.00
HVAC	3.56
Plumbing Systems / Fixtures	3.75
Total Building Condition	83.71

Summary	Function	Mechanical / Electrical / Plumbing	Technology	Safety / Security	Comfort & Health	Equipment	Total
Classrooms	3.67	2.44	4.38	1.57	3.33	3.96	19.34
Special Education	3.00	1.59	4.38	1.50	4.17	5.00	19.63
Art / Technology	3.03	2.34	3.43	1.89	3.86	2.74	17.28
Physical Education	3.75	2.25	3.75	4.00	2.00	2.50	18.25
Media Center	3.50	3.06	2.50	3.33	3.00	2.50	17.89
AVERAGE	3.39	2.34	3.69	2.46	3.27	3.34	18.48

Lincoln Elementary School



Campus Site Size: 5.63 acres
Number of Floors/Stories: 1
Student Capacity: 632
Classrooms: 30

Building Areas: 109,809 Sq. Ft.
Grade Configuration: K-4
Enrollment : 423

Date (s) of Construction: 2006 New Building/ Occupancy

Elementary Schools Conditions Assessments

Car / Bus Drop-off/ Pick-up / Stacking	4.60
Drives, Lots, and Walks	4.86
Fields/ Playgrounds /Site Improvements	4.50
Secure Visitor Access	5.00
Surveillance / Cameras	5.00
Roofs	5.00
Walls	5.00
Windows / Doors	5.00
ADA / Accessibility	4.33
Floors	4.58
Ceilings	4.00
Doors	5.00
Fixed Equipment (Casework/ Lockers / Bleacher	4.72
Restrooms	3.90
Technology	5.00
Electrical	5.00
Lighting	4.25
Temperature Control	5.00
HVAC	5.00
Plumbing Systems / Fixtures	5.00
Total Building Condition	94.74

Summary	Function	Mechanical / Electrical / Plumbing	Technology	Safety / Security	Comfort & Health	Equipment	Total
Classrooms	4.94	1.78	4.48	1.69	5.00	4.82	22.71
Special Education	3.25	1.14	4.69	2.00	5.00	5.00	21.07
Art / Technology	4.00	2.00	2.75	1.43	3.96	2.71	16.85
Physical Education	4.29	2.08	2.50	4.00	3.00	5.00	20.87
Media Center	4.50	3.44	3.50	3.33	3.00	5.00	22.77
AVERAGE	4.20	2.09	3.58	2.49	3.99	4.50	20.85

Madison Elementary School



Campus Site Size: 3.0 acres
 Number of Floors/Stories: 2
 Student Capacity: 590
 Classrooms: 29

Building Areas: 87,803 Sq. Ft.
 Grade Configuration: K-4
 Enrollment: 635

Date (s) of Construction: 1929 Original Construction/ Occupancy
 1965 Gym Addition
 2001 Additions & Complete Renovation

Elementary Schools Conditions Assessments

Car / Bus Drop-off/ Pick-up / Stacking	4.53
Drives, Lots, and Walks	4.00
Fields/ Playgrounds /Site Improvements	4.46
Secure Visitor Access	5.00
Surveillance / Cameras	4.50
Roofs	3.00
Walls	4.00
Windows / Doors	3.50
ADA / Accessibility	3.00
Floors	4.29
Ceilings	4.80
Doors	5.00
Fixed Equipment (Casework/ Lockers / Bleacher	4.73
Restrooms	5.00
Technology	3.86
Electrical	4.25
Lighting	3.60
Temperature Control	5.00
HVAC	5.00
Plumbing Systems / Fixtures	4.42
Total Building Condition	85.94

Summary	Function	Mechanical / Electrical / Plumbing	Technology	Safety / Security	Comfort & Health	Equipment	Total
Classrooms	4.94	4.06	4.59	2.03	4.61	4.79	25.03
Special Education	2.50	2.39	5.00	1.88	2.71	4.69	19.16
Art / Technology	4.00	2.58	2.00	1.67	2.50	2.01	14.76
Physical Education	4.64	1.88	2.50	3.00	2.00	2.50	16.52
Media Center	3.50	0.83	3.50	2.50	1.00	3.75	15.08
AVERAGE	3.92	2.35	3.52	2.21	2.56	3.55	18.11

Marquette Elementary School



Campus Site Size: 7.2 acres
 Number of Floors/Stories:
 Student Capacity: 536
 Classrooms: 22

Building Areas: 79,506 Sq. Ft.
 Grade Configuration: Pre-K-
 Enrollment: 329

Date (s) of Construction: 2011 Original Construction/ Occupancy

Elementary Schools Conditions Assessments

A Site Circulation and Amenities

Car / Bus Drop-off/ Pick-up / Stacking	4.73
Drives, Lots, and Walks	5.00
Fields/ Playgrounds /Site Improvements	4.85

B Safety and Security

Secure Visitor Access	5.00
Surveillance / Cameras	5.00

C Building Envelope

Roofs	4.00
Walls	4.50
Windows / Doors	5.00

D Building Interiors Environment

ADA / Accessibility	4.50
Floors	4.77
Ceilings	5.00
Doors	5.00
Fixed Equipment (Casework/ Lockers / Bleacher	4.92
Restrooms	5.00

E Building Systems

Technology	4.83
Electrical	5.00
Lighting	5.00
Temperature Control	5.00
HVAC	5.00
Plumbing Systems / Fixtures	4.75

Total Building Condition

96.85

Summary	Function	Mechanical / Electrical / Plumbing	Technology	Safety / Security	Comfort & Health	Equipment	Total
Classrooms	4.94	4.06	4.59	2.03	4.61	4.79	25.03
Special Education	2.50	2.39	5.00	1.88	2.71	4.69	19.16
Art / Technology	4.00	2.58	2.00	1.67	2.50	2.01	14.76
Physical Education	4.64	1.88	2.50	3.00	2.00	2.50	16.52
Media Center	3.50	0.83	3.50	2.50	1.00	3.75	15.08
AVERAGE	3.92	2.35	3.52	2.21	2.56	3.55	18.11

Marshall Elementary School



Campus Site Size: 17.39 acres

Number of Floors/Stories: 1

Student Capacity: 842

Teaching Stations: 29

Date (s) of Construction: 1958 Original Construction/ Occupancy
1960 Addition

2003 Addition and Partial Renovation - Plan 'Z'

Building Areas: 97,078 Sq. Ft.

Grade Configuration: 5-8

Enrollment: 367

Elementary Schools Conditions Assessments

Car / Bus Drop-off/ Pick-up / Stacking	4.47
Drives, Lots, and Walks	4.60
Fields/ Playgrounds /Site Improvements	4.08
Secure Visitor Access	5.00
Surveillance / Cameras	4.50
Roofs	5.00
Walls	5.00
Windows / Doors	3.50
ADA / Accessibility	4.33
Floors	4.58
Ceilings	4.67
Doors	5.00
Fixed Equipment (Casework/ Lockers / Bleacher	4.77
Restrooms	5.00
Technology	4.50
Electrical	4.25
Lighting	4.40
Temperature Control	2.00
HVAC	3.89
Plumbing Systems / Fixtures	3.64
Total Building Condition	87.17

Summary	Function	Mechanical / Electrical / Plumbing	Technology	Safety / Security	Comfort & Health	Equipment	Total
Classrooms	4.64	3.23	4.28	1.50	4.11	4.00	21.77
Special Education	2.34	1.77	4.38	1.63	3.33	3.91	17.35
Art / Technology	3.83	1.59	2.00	1.67	0.00	3.75	12.84
Physical Education	4.64	1.88	3.75	3.00	2.00	5.00	20.27
Media Center	5.00	3.06	4.00	3.33	3.00	2.50	20.89
AVERAGE	4.09	2.31	3.68	2.23	2.49	3.83	18.62

McKinley Elementary School



Campus Site Size: 11.85 acres
 Number of Floors/Stories: 1
 Student Capacity: 422
 Teaching Stations: 24

Building Areas: 70,869 Sq. Ft.
 Grade Configuration: K-4 & Spec. Ed.
 Enrollment: 468

Date (s) of Construction: 1949 Original Construction/ Occupancy
 1972 Classrooms Addition & Media Center Expansion
 1986 Special Ed. Facility Addition

Elementary Schools Conditions Assessments

A Site Circulation and Amenities

Car / Bus Drop-off/ Pick-up / Stacking	4.07
Drives, Lots, and Walks	3.00
Fields/ Playgrounds /Site Improvements	4.42

B Safety and Security

Secure Visitor Access	4.75
Surveillance / Cameras	4.33

C Building Envelope

Roofs	4.00
Walls	2.00
Windows / Doors	3.50

D Building Interiors Environment

ADA / Accessibility	4.17
Floors	4.19
Ceilings	4.40
Doors	5.00
Fixed Equipment (Casework/ Lockers / Bleacher	4.13
Restrooms	4.71

E Building Systems

Technology	4.50
Electrical	2.75
Lighting	4.00
Temperature Control	3.00
HVAC	4.17
Plumbing Systems / Fixtures	4.82

Total Building Condition

79.90

Summary	Function	Mechanical / Electrical / Plumbing	Technology	Safety / Security	Comfort & Health	Equipment	Total
Classrooms	3.36	3.37	4.49	1.67	5.00	3.41	21.31
Special Education	3.44	2.40	4.69	1.25	3.33	5.00	20.10
Art / Technology	3.00	2.05	3.00	1.43	3.33	4.17	16.97
Physical Education	4.17	1.82	3.13	3.00	3.00	5.00	20.11
Media Center	4.50	2.22	3.00	1.67	1.00	1.25	13.64
AVERAGE	3.69	2.37	3.66	1.80	3.13	3.77	18.43

Monroe Elementary School



Campus Site Size:
Number of Floors/Stories:N/A
Student Capacity: 608
Classrooms: 31

Building Areas: 103,578 Sq. Ft.
Grade Configuration: K-4
Enrollment: 425

Date (s) of Construction: 1932 Original Construction/ Occupancy
1947 Classrooms Addition
1952 Classrooms Addition
1959 Classrooms & Cafeteria Addition
2010 Addition & Complete Renovation

Elementary Schools Conditions Assessments

A Site Circulation and Amenities

Car / Bus Drop-off/ Pick-up / Stacking	4.57
Drives, Lots, and Walks	3.14
Fields/ Playgrounds /Site Improvements	3.77

B Safety and Security

Secure Visitor Access	5.00
Surveillance / Cameras	5.00

C Building Envelope

Roofs	3.00
Walls	4.00
Windows / Doors	4.83

D Building Interiors Environment

ADA / Accessibility	4.33
Floors	3.83
Ceilings	5.00
Doors	5.00
Fixed Equipment (Casework/ Lockers / Bleacher	4.53
Restrooms	5.00

E Building Systems

Technology	5.00
Electrical	5.00
Lighting	5.00
Temperature Control	5.00
HVAC	4.78
Plumbing Systems / Fixtures	5.00

Total Building Condition 90.80

Summary	Function	Mechanical / Electrical / Plumbing	Technology	Safety / Security	Comfort & Health	Equipment	Total
Classrooms	4.85	4.00	2.90	1.73	5.00	3.44	21.92
Special Education	2.75	1.88	4.06	2.00	5.00	4.69	20.38
Art / Technology	4.33	2.17	3.67	2.62	2.92	1.94	17.65
Physical Education	2.86	1.67	2.50	3.00	3.00	2.50	15.52
Media Center	5.00	3.61	3.00	3.33	5.00	5.00	24.94
AVERAGE	3.96	2.66	3.23	2.54	4.18	3.52	20.08

Muessel Elementary School



Campus Site Size: 3.94 acres
Number of Floors/Stories: 2
Student Capacity: 502
Classrooms: 33

Building Areas: 94,278 Sq. Ft.
Grade Configuration: K-4
Enrollment: 256

Date (s) of Construction: 1998 Original Construction/ Occupancy

Elementary Schools Conditions Assessments

A Site Circulation and Amenities

Car / Bus Drop-off/ Pick-up / Stacking	4.53
Drives, Lots, and Walks	4.71
Fields/ Playgrounds /Site Improvements	4.43

B Safety and Security

Secure Visitor Access	5.00
Surveillance / Cameras	5.00

C Building Envelope

Roofs	4.00
Walls	5.00
Windows / Doors	5.00

D Building Interiors Environment

ADA / Accessibility	4.33
Floors	4.23
Ceilings	3.33
Doors	4.00
Fixed Equipment (Casework/ Lockers / Bleacher)	4.69
Restrooms	5.00

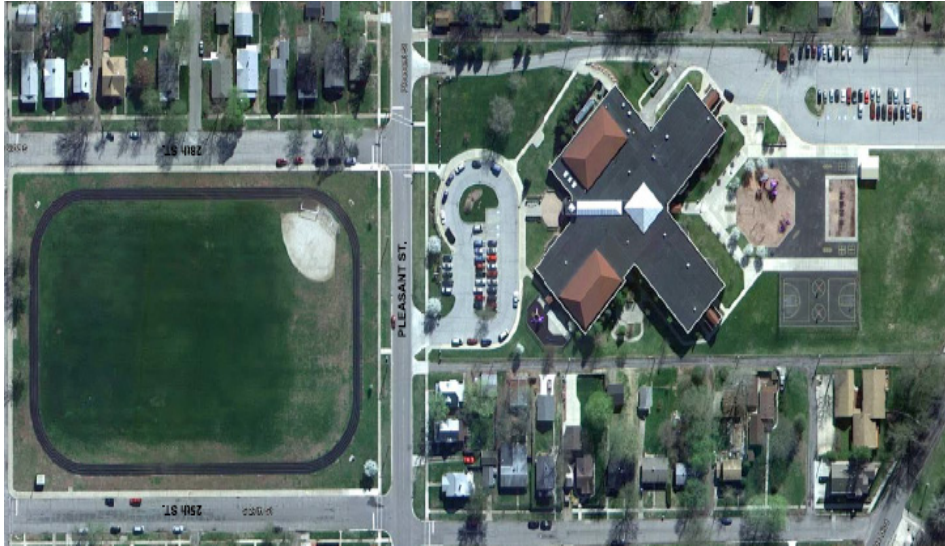
E Building Systems

Technology	4.00
Electrical	2.75
Lighting	4.29
Temperature Control	5.00
HVAC	4.89
Plumbing Systems / Fixtures	4.73

Total Building Condition	88.91
---------------------------------	--------------

Summary	Function	Mechanical / Electrical / Plumbing	Technology	Safety / Security	Comfort & Health	Equipment	Total
Classrooms	5.00	3.09	4.12	1.43	4.14	4.83	22.61
Special Education	3.00	1.51	3.75	2.00	3.75	4.22	18.23
Art / Technology	3.50	2.08	2.33	0.83	2.78	2.92	14.44
Physical Education	5.00	1.88	3.75	4.00	3.00	2.50	20.13
Media Center	4.50	3.06	4.00	2.08	4.00	2.50	20.14
AVERAGE	4.20	2.32	3.59	2.07	3.53	3.39	19.11

Nuner Elementary School



Campus Site Size: 11.8 acres
 Number of Floors/Stories: 2
 Student Capacity: 498
 Classrooms: 30

Building Areas: 89,772 Sq. Ft.
 Grade Configuration: K - 4
 Enrollment: 506

Date (s) of Construction: 1999 New Building/ Occupancy

Elementary Schools Conditions Assessments

A Site Circulation and Amenities

Car / Bus Drop-off/ Pick-up / Stacking	5.00
Drives, Lots, and Walks	4.57
Fields/ Playgrounds /Site Improvements	4.77

B Safety and Security

Secure Visitor Access	5.00
Surveillance / Cameras	4.33

C Building Envelope

Roofs	5.00
Walls	4.00
Windows / Doors	5.00

D Building Interiors Environment

ADA / Accessibility	4.33
Floors	4.63
Ceilings	5.00
Doors	5.00
Fixed Equipment (Casework/ Lockers / Bleacher	4.58
Restrooms	5.00

E Building Systems

Technology	4.43
Electrical	4.00
Lighting	3.60
Temperature Control	3.00
HVAC	4.89
Plumbing Systems / Fixtures	5.00

Total Building Condition

91.13

Summary	Function	Mechanical / Electrical / Plumbing	Technology	Safety / Security	Comfort & Health	Equipment	Total
Classrooms	4.49	4.09	4.50	1.58	0.00	3.61	18.26
Special Education	2.50	3.13	5.00	2.00	5.00	5.00	22.63
Art / Technology	3.50	1.70	3.28	2.14	2.50	2.29	15.42
Physical Education	3.93	2.71	2.50	4.00	3.00	5.00	21.14
Media Center	5.00	0.83	3.00	2.50	1.50	2.50	15.33
AVERAGE	3.88	2.49	3.66	2.44	2.40	3.68	18.55

Swanson Elementary School



Campus Site Size: 17.0 acres
 Number of Floors/Stories: Grade
 Student Capacity: 606
 Classrooms: 25

Building Areas: 69,869 Sq. Ft.
 Configuration: K-4
 Enrollment: 384

Date (s) of Construction: 1960 Original Construction/ Occupancy
 1993 Cafeteria Addition

Elementary Schools Conditions Assessments

A Site Circulation and Amenities

Car / Bus Drop-off/ Pick-up / Stacking	4.60
Drives, Lots, and Walks	3.43
Fields/ Playgrounds /Site Improvements	3.85

B Safety and Security

Secure Visitor Access	5.00
Surveillance / Cameras	4.33

C Building Envelope

Roofs	4.00
Walls	5.00
Windows / Doors	3.50

D Building Interiors Environment

ADA / Accessibility	4.33
Floors	4.50
Ceilings	4.00
Doors	4.00
Fixed Equipment (Casework/ Lockers / Bleacher	4.50
Restrooms	5.00

E Building Systems

Technology	4.33
Electrical	3.25
Lighting	4.17
Temperature Control	2.00
HVAC	3.00
Plumbing Systems / Fixtures	3.42

Total Building Condition

80.21

Summary	Function	Mechanical / Electrical / Plumbing	Technology	Safety / Security	Comfort & Health	Equipment	Total
Classrooms	4.22	3.94	5.00	1.44	4.95	2.66	22.20
Special Education	2.50	2.19	3.75	2.00	5.00	5.00	20.44
Art / Technology	1.67	1.85	3.17	2.22	2.83	2.50	14.24
Physical Education	3.57	1.67	4.38	4.00	3.00	2.50	19.11
Media Center	3.50	1.11	2.00	1.67	4.00	1.25	13.53
AVERAGE	3.09	2.15	3.66	2.27	3.96	2.78	17.90

Warren Elementary School



Campus Site Size: 14.33
Number of Floors/Stories: 1
Student Capacity: 338
Classrooms: 22

Building Areas: 60,851 Sq. Ft.
Grade Configuration: K-4
Enrollment: 215

Date (s) of Construction: 1957 Original Construction/ Occupancy
1964 Classroom Addition
1980 Classroom Addition

Elementary Schools Conditions Assessments

A Site Circulation and Amenities

Car / Bus Drop-off/ Pick-up / Stacking	3.69
Drives, Lots, and Walks	3.83
Fields/ Playgrounds /Site Improvements	3.62

B Safety and Security

Secure Visitor Access	2.88
Surveillance / Cameras	4.67

C Building Envelope

Roofs	4.50
Walls	3.00
Windows / Doors	5.00

D Building Interiors Environment

ADA / Accessibility	4.33
Floors	4.35
Ceilings	4.67
Doors	5.00
Fixed Equipment (Casework/ Lockers / Bleacher	3.69
Restrooms	5.00

E Building Systems

Technology	3.83
Electrical	3.25
Lighting	2.17
Temperature Control	5.00
HVAC	3.78
Plumbing Systems / Fixtures	3.58

Total Building Condition

79.84

Summary	Function	Mechanical / Electrical / Plumbing	Technology	Safety / Security	Comfort & Health	Equipment	Total
Classrooms	4.16	3.06	3.88	1.55	4.00	3.58	20.23
Special Education	2.50	2.36	3.13	1.50	4.17	4.22	17.87
Art / Technology	3.00	2.27	3.00	2.14	2.50	2.92	15.83
Physical Education	4.29	1.04	0.00	2.00	0.50	2.50	10.33
Media Center	3.50	1.39	2.00	1.25	3.00	5.00	16.14
AVERAGE	3.49	2.03	2.40	1.69	2.83	3.64	16.08

Wilson Elementary School



Campus Site Size: 17.00 acres
Number of Floors/Stories: 1
Student Capacity: 458
Classrooms: 26

Building Areas: 76,782 Sq. Ft.
Grade Configuration: K-4
Enrollment :386

Date (s) of Construction: 1992 Original Construction/ Occupancy

Elementary Schools Conditions Assessments

A Site Circulation and Amenities

Car / Bus Drop-off/ Pick-up / Stacking	5.00
Drives, Lots, and Walks	4.57
Fields/ Playgrounds /Site Improvements	4.77

B Safety and Security

Secure Visitor Access	4.13
Surveillance / Cameras	5.00

C Building Envelope

Roofs	4.50
Walls	4.00
Windows / Doors	4.00

D Building Interiors Environment

ADA / Accessibility	4.33
Floors	4.67
Ceilings	5.00
Doors	5.00
Fixed Equipment (Casework/ Lockers / Bleacher	3.46
Restrooms	4.71

E Building Systems

Technology	4.67
Electrical	4.25
Lighting	3.80
Temperature Control	3.00
HVAC	4.00
Plumbing Systems / Fixtures	4.75

Total Building Condition

87.60

Summary	Function	Mechanical / Electrical / Plumbing	Technology	Safety / Security	Comfort & Health	Equipment	Total
Classrooms	3.51	3.75	4.04	2.58	3.43	3.66	20.98
Special Education	0.00	0.00	0.00	0.00	0.00	0.00	0.00
Art / Technology	3.75	2.50	3.00	3.57	3.33	2.50	18.65
Physical Education	3.57	1.04	0.00	3.00	2.50	2.50	12.61
Media Center	5.00	3.33	4.00	3.33	3.13	5.00	23.79
AVERAGE	3.96	2.66	2.76	3.12	3.10	3.42	19.01

References and Source Material

- 1) South Bend sees largest population growth since 1950s. South Bend, Indiana. (2021, August 12). Retrieved February 2022, from <https://southbendin.gov/south-bend-sees-largest-population-growth-since-1950s/>
- 2) Indiana. Peristats | March of Dimes. (n.d.). Retrieved February 2022, from <https://www.marchofdimes.org/peristats/ViewSubtopic>.